



19th INTERNATIONAL CONGRESS OF SPELEOLOGY

38th Brazilian Congress of Speleology

20-27 July 2025 - BELO HORIZONTE - MINAS GERAIS - BRAZIL

60 Years of the UIS: History to the Future

Second Circular

UPDATED VERSION - JANUARY 2025

COVER PHOTO:

Cave of Bromélias* - Ibitipoca State Park - IEF/MG

Lima Duarte, Minas Gerais, Brazil

PHOTO BY GABRIEL LOURENÇO

(SEE - Sociedade Excursionista e Espeleológica)

* See [page 47](#) = Post Congress #8



19th INTERNATIONAL CONGRESS OF SPELEOLOGY

38th Brazilian Congress of Speleology

20-27 July 2025 - BELO HORIZONTE - MINAS GERAIS - BRAZIL

ORGANIZING COMMITTEE

President: **José Ayrton Labegalini**

Chairman: **Allan Calux**

Vice-Chairman: **Jocy Brandão Cruz**

Secretary General: **Amanda Jevaux da S. de Sousa**

Treasurer: **Paulo Arenas**

UIS Representative: **Nivaldo Colzato**

Scientific Coordinator: **Rodrigo Lopes Ferreira**

Website: www.speleo2025.org

Contact: committee@speleo2025.org

Mailing address:

19th INTERNATIONAL CONGRESS OF SPELEOLOGY

Att. Sociedade Brasileira de Espeleologia (SBE)

Caixa Postal 7031 — Parque Taquaral — Campinas/SP

CEP 13076-970 — BRASIL



Judeia Cave in Presidente Figueiredo - AM.

PHOTO BY RICARDO MARTINELLI

WELCOME TO CIRCULAR 2! _____

Dear speleologists, cavers, and cave lovers around the world, I am pleased to share with you the Second Circular of the 19th International Congress of Speleology (ICS), the world's premier speleological event.

A function of the International Union of Speleology (UIS) held every four years in a location selected by the delegates of the UIS member nations, its 19th issue is organized by the Brazilian Speleological Society (SBE) in partnership with the Center for Research and Conservation of Caves (ICMBio/CECAV).

The main purpose of the ICS is to bring together the cutting-edge in cave and karst science, speleological explorations around the world, and clearly, to promote the widespread expansion of knowledge with a view to contributing to the conservation of speleological heritage. The 19th issue will include the 38th Brazilian Congress of Speleology (CBE) into a single combined event and will also host the major celebration of the 60th Anniversary of the UIS.

Brazil had the honor of organizing the 13th ICS in Brasilia, the country's capital, in 2001, which was a great success and those who had the chance to attend it certainly remember the memorable days! For this 19th issue, the host city will be Belo Horizonte, located in the heart of the state of Minas.

The people of Minas Gerais are internationally renowned for their hospitality, fine cuisine, and architectural refinement. It is with this welcoming spirit that we invite the international speleological community to come.

In addition to the details of the congress itself, this Second Circular provides tips for a smooth and enjoyable trip, including advice on transport and accommodation, guidelines for registering for the event, pre- and post-congress activities, and more. As you read through this circular, remember that it cannot hold all of the information on the congress.

Please see the 19th ICS website www.speleo2025.org for complete details. There you will find a variety of useful resources for planning your participation in the congress, as well as regular updates to help you on the progress of your preparations. Take advantage of the 19th ICS not only to improve your technical and scientific knowledge, but also to make new connections and strengthen ties with colleagues from all over the world.

The 19th ICS will be a unique opportunity to share common experiences, discoveries and passions in an atmosphere of friendship and collaboration.

Finally, I would like to reinforce that the 19th ICS Organizing Committee is available to answer any questions or concerns that may arise during your planning process.

Please, don't hesitate to contact us at committee@speleo2025.org.

We will be glad to help!

Dr. Allan Silas Calux

Chairman of the 19th ICS Organizing Committee
chairman@speleo2025.org



Cave of Viajantes - Ibitipoca State Park (IEF/MG).

PHOTO BY GABRIEL LOURENCO



1 IMPORTANT! PLEASE READ!

The following is important information everyone should understand about the 19th ICS before reading further in this circular. It will help you better understand the information, what to expect in Belo Horizonte, and what will be expected of you.

First, please, we strongly encourage you to read the website. The address is in the footer on each page of this circular. The website <https://www.speleo2025.org> has far more information and details than could be informed here. We have tried to include all critical information in this circular, but it is possible something critical to you is only on the website. Updated information is posted on the website as it occurs.

Please subscribe on the website to receive first-hand updates and news about the event.

BEFORE REGISTERING TO THE 19th ICS

- **On-line Registration** will commence on July 15th, 2024. Early registration will have special discounts. See details on [page 19](#).

Among the benefits of registering early are: reduced costs of flights, greater choice of accommodation when booked well ahead, full choice of pre- and post-congress trips, more time to get excited and plan for your trip to Brazil.

- **Refund Policy:** According to Brazilian legislation, in some situations is possible to refund registrants. See details on [page 21](#).
- **Letter of invitation:** If you need a letter of invitation to the Congress, please contact the Congress Secretary after July 15th, 2024 by email committee@speleo2025.org.
- **Reservations** for all trips and activities will be based on the order in which you register. Reservations will not be held for persons who have not registered.
- **Reservation** for pre- and post-congress trips must be received by 15 May 2025. After this date, participation will depend on whether there are places available.
- **Pre- and post-Congress trips** may be canceled for lack of participation; as you can choose only one option of trip, if it is canceled you will have your investment returned (if already paid).
- **The ICS will send email messages** to confirm registration. However, confirmation of ICS registration is not confirmation of excursion or field

trip registration. Do not make travel arrangements based on your pre- and post-ICS trip requests until after you are contacted by the ICS confirming that the trip will occur.

- **For the field trips**, be careful about venomous and dangerous animals such as **snakes** and **spiders**. **Ticks** in some regions carry spotted fever. These illnesses are rare, but there are no immunizations for them. So, do not walk around without proper clothes and good footwear, including at night. At the trails, be very careful also not to come into contact with **nettles**, as this plant can cause serious skin irritation.

In many parts of Brazil where the field trips will be held, access to medical assistance can be a long way away. Please make sure you have adequate travel insurance.

- **All caves in Brazil** are protected by Federal law. It is therefore expressly prohibited to remove from the cave any type of sample, whether animal, vegetable, or mineral, without prior official authorization.

In addition, visitors are expected not to cause any damage to the cave, property, or people in their group.

- **If you are submitting a paper**, full registration of the author or at least one of the authors for joint work is required.
- **Portuguese and English** will be the main languages of this ICS and its field trips. Translation services will not be provided. However, participants are welcome to present their papers in one of the official languages of the UIS than English—*French, German, Italian, Russian, and Spanish*. In this case, however, they must include an abstract in English.

For oral presentations, the texts accompanying the images shown to the audience must be in English. The presence of a translator, if necessary, is allowed, but the maximum time established for the presentation must be respected. In this regard, we want to encourage authors to schedule their presentations for fifteen minutes, leaving the remaining five minutes for questions.

BEFORE BOOKING YOUR TRIP TO BRAZIL

- **Visa.** For the proper procedures for applying (or not) for visas to travel to Brazil, persons intending to participate in the 19th ICS should check the website for the Brazilian Embassy in their home country. *See more information about Visa on [page 18](#).*



- **Please check with your doctor** about the immunizations you may need before travelling internationally. If you are allergic to any type of vegetation or insect bites (mosquitoes and bees, for example) we strongly advise you to bring the corresponding histamine.

Also, be aware that bat guano in some Brazilian caves has fungus that can cause lung infections such as **histoplasmosis**. Efforts will be made to avoid conditions that cause exposure to these diseases, but prevention cannot be guaranteed.

There is a risk of contracting **Yellow Fever** specially in the Amazon Forest region (northern Brazil).

Therefore, try to get vaccinated against this disease and bring your international vaccination card with you. Although we do not experience **White Nose Syndrome** in Brazil, it is highly recommended that you bring your clothes and cave equipment properly clean and sanitized.

- **Alcohol.** According to Brazilian law, no alcoholic beverages will be served to anyone under 18 years of age. Identification showing date of birth may be required. The penalties for driving under the influence of alcohol are severe.
- **Smoking.** According to Brazilian legislation, it is prohibited to smoke cigarettes, cigars, pipes, hookahs, and other tobacco products in places of collective use, public or private, throughout the country. This includes commercial dining areas, public transport and many recreational areas especially those close to children. Tobacco products cannot be bought by anyone under 18 years of age. During the week of the congress, a special smoking area will be available for smokers outside the venue.
- **Pets and large recreational vehicles.** According to Minascentro Convention Center rules (the 19th ICS venue), no pets will be allowed in the internal areas of the building and these types of vehicles will not be accepted in the private indoor parking lot. If you need help in this regard, please contact the congress organization via email committee@speleo2025.org.
- **Tipping:** In Brazil, the practice of tipping is common. Many establishments (restaurants mainly) automatically add a 10% fee to the bill as a service. However, it is up to the customer to pay this additional amount. Most customers agree and pay as a gesture of appreciation for the good service provided.
- **Payments in cash:** No foreign currencies, such as US dollars or Euros in cash are accepted in Brazil. Please pay your expenses with Brazilian money (Real) or Credit Card.

- **Charging batteries and devices:** The voltage standard in the city of Belo Horizonte is 127 volts. Pay attention to the sockets, as many hotels also offer the 220 volts option. In some states where field trips will occur, the standard voltage is 220 volts. Pay attention to this information to avoid burning any non-bivolt equipment. Brazil's electrical energy has a frequency of 60Hz.

- **The standard Brazilian sockets** have three rounded pins inlet. If you prefer, bring your adapter, although this item is easy to purchase at the local market. In the case of devices that use only 127 or 220 volts, depending on the region you will be a transformer is needed and these are not easy to be find.



Standard Brazilian sockets.

- **The weather** in Belo Horizonte in July is generally dry and it rarely rains. For the period of the congress, the expected conditions are:
 - Average temperature: 18 °C
 - Minimum temperature: 13 °C
 - Maximum temperature: 25 °C
 - Rainfall: 9 mm (the driest period of the year in BH)
- **ICS Travel Agent:** The ICS registration process offers all information you need to book Wednesday trips as well as pre- and post-Congress excursions.

However, for any other travel you are willing to do in Belo Horizonte and the region, or to any other place in Brazil, you are welcome to contact the ICS Travel Agency. If you make your own reservations online or with another agency, any changes must be made by you or that agency. By booking with the official partner agency of the ICS, they will be available to quickly make changes for you once they will have an office inside the Minascentro, the venue of the congress.

Once the 19th ICS Organizing Committee selects the agency, it will be announced on the ICS website.



ORIGIN OF THE ICS

In the mid-1900s, the international speleological community, mostly Europeans, had the idea of holding international speleological congresses. The first one was held in Paris, France, in 1953.

Since then, International Speleological Congresses (ICS) have been held in Italy (*Bari, 1958*), Austria (*Vienna, 1961*), Yugoslavia (*Postojna, 1965*), when the UIS was founded and, since then, has taken over the organization of the ICSs every four years in West Germany (*Stuttgart, 1969*), Czechoslovakia (*Olomouc, 1973*), Great Britain (*Sheffield, 1977*), United States (*Bowling Green, 1981*), Spain (*Barcelona, 1986*), Hungary (*Budapest, 1989*), China (*Beijing, 1993*), Switzerland (*La Chaux-des-Fonds, 1997*), Brazil (*Brasilia, 2001*), Greece (*Kalamos, 2005*), United States (*Kerrville, 2009*), Czech Republic (*Brno, 2013*), Australia (*Sydney, 2017*), and France (*Le Bourget-du-Lac, 2022*)

The next, as you know, will be in Brazil (*Belo Horizonte, 2025*).

In these congresses, papers on the various facets of speleology are presented, including scientific topics such as geology, hydrogeology, mineralogy, biology, climatology, archaeology, paleontology, geography, and therapy, as well as on technical work (exploration, survey, rescue, new techniques, documentation) and cultural themes (religion, art, music, painting, sculpture, and the collection of stamps, coins, flyers, and other souvenirs).

In addition to the formal presentation of papers, these congresses schedule meetings of the many UIS Commissions. Opportunities are also provided for the exchange of ideas and participation in various cultural activities, such as social gatherings, competitions including cave photography and speleolympics, technical visits, as well as excursions before, during, and after the congress to visit the karst and caves of the host country.

Over 21,000 pages of valuable information are available in the congress's proceedings. The 19th ICS will add even more to this proud and important history.

On the next pages is what you can expect.



The logos of the eighteen ICS held from 1953 to 2022.
All proceedings are available on the UIS website.
[Click here to access the complete collection.](#)

3 THE 19th ICS ORGANIZERS

THE UIS



Union Internationale
de Spéléologie

The initiative of speleologists at the 1965 ICS led to the proposal for the creation of an international entity to unite speleologists from around the world and coordinate their speleological activities. The UIS was then founded on September 16, 1965, during that 4th ICS.

According to its Statutes, the UIS is a non-profit, non-governmental organization which promotes interaction between academic and technical speleologists of a wide range of nationalities to develop and coordinate international speleology in all its scientific, technical, cultural, social, and economic aspects.

STRUCTURE

The UIS is presided over by the Bureau, which is comprised of an Executive Committee of five officers (President, two Vice Presidents, Secretary General, and Treasurer) and seven Adjunct Secretaries. Each Bureau member must be from a different country. These Bureau members are elected at the General Assemblies, which are held during the International Congresses. The Bureau is assisted by an Advisory Committee, consisting mostly of the past presidents and other past officers.

To coordinate and promote the technical and scientific development of international speleology, the UIS has at present 20 Commissions and 12 sub-Commissions to advance those topics.

To integrate the results of speleological activities of the member countries for use by speleologists around the world, the UIS maintains a Documentation Center in La Chaux-des-Fonds, Switzerland, via the Swiss Speleological Society, and online through the Karst Information Portal.

The directions of the UIS depend largely on the Bureau. Policies are developed during its meetings throughout the year, as well as during the General Assemblies.

The General Assembly consists of the delegates of the member countries. It approves major decisions proposed by the Bureau, reviews reports of the Commissions, evaluates the financial situation of the UIS, approves new and modified major UIS documents, approves new members countries, elects new Bureau members, and selects the host country for the next congress.



Building where the UIS Library is located in La Chaux-des-Fonds, Switzerland.



Headquarters of the Karst Research Institute in Postojna, Slovenia, where the offices of the UIS are located. On the right, the bronze plaque with the emblem of the UIS affixed below the name of the institute.



PRESENT SITUATION

At present, the UIS has 57 member countries, located on all inhabited continents of the world, and is open to the affiliation of all national associations and federations.

The UIS also publishes the IJS-International Journal of Speleology (via the University of South Florida) and the UIS Bulletin for the dissemination of news of the Union. The Bibliographic Commission also publishes Speleological Abstracts, an annual bibliographic listing of speleological literature, and the Karst Information Portal provides free access to publications online.

UIS also maintains a website containing information about speleological contacts around the world, as well as to UIS documents, publications, list of member countries, and commissions. The web address of the UIS is www.uis-speleo.org.

Since July 20, 2002, the UIS offices have been at Titov trg 2, Postojna 6230, Slovenia, in space provided by the government via the Institute of Karst Research of the Slovenian Academy of Arts and Sciences, where all the UIS Archives are stored.

INVITATION

If you are a speleologist, whether a scientist or an explorer, or simply someone who likes caves, contact the UIS and have your speleological group contact the national federation or society of your country. Encourage your group to join the UIS. Encourage your national association or federation to become a member of the UIS so it can send a delegate and vote at the General Assembly.

Help the UIS grow and advance truly international speleology, whether developing new techniques, exploring new caves, studying new theories, practicing sustainable speleological tourism, preserving natural heritage, publishing information, or encouraging sustainable development of caves and karst areas. Enjoy speleology in your own way but participate. Don't wait to see what the UIS can do for you, but rather see what you can do to help develop speleology.

Continue to enjoy speleology in the place and way you always have but share what you do with the rest of the international community through and with the support of the UIS.

MAIN PUBLICATIONS

Click on the image to access the respective homepages.



PHOTO BY JOSÉ AYRTON LABEGLINI

The UIS officers in July 31st, 2022, in Le Bourget-du-Lac, France, just after being elected by the General Assembly for the 3-year period from 2022–2025:

LEFT TO RIGHT: José María CALAFORRA (Adjunct Secretary/Spain); Patricia SEISER (Adjunct Secretary/USA); Mario PARISE (Adjunct Secretary/Italy); Johannes MATTES (Secretary General/Austria); Mladen GARAŠIĆ (Treasurer/Croatia); Gerard CAMPION (Adjunct Secretary/UK); Zdeněk MOTYČKA (Vice-President of Administration/Czech Republic); Nadja ZUPAN HAJNA (President/Slovenia); Bärbel VOGEL (Adjunct Secretary/Germany); Nivaldo COLZATO (Vice-President of Operations/Brazil); Nathalia Vanessa UASAPUD ENRÍQUEZ (Adjunct Secretary/Colombia); and Marc MENTENS (Adjunct Secretary/Philippines).



3 THE 19th ICS ORGANIZERS

THE SBE

The Brazilian Speleological Society (SBE) was founded on November 1st, 1969, in the city of Ouro Preto, Minas Gerais (MG), during the 4th Brazilian Congress of Speleology (CBE). Its first president was Michel Le Bret (a French speleologist living in Brazil at that time), to whom Pierre Martin and Guy-Christian Collet (French too), Jairo Augusto de Vasconcelos Reis, and Luiz Carlos de Alcântara Marinho joined to compose the first bureau.

More than half a century later, inspired by these and other pioneers, new generations of speleologists continue “to keep the flame burning,” encouraging, organizing and disseminating actions related to speleology, whether in the sports, technical, social, or scientific fields.

The SBE is the Brazilian representative to the International Union of Speleology (UIS) and the Latin American and Caribbean Speleological Federation (FEALC). It gathers, at a national level, speleo teams and individual people interested in the exploration, study, and conservation of caves and karst. There are currently 145 individual members and 30 associated speleo teams, distributed throughout all Brazilian regions. These members contribute to the maintenance and effective performance of the SBE through their annual fees or through their voluntary work.

Institutionally, the SBE is managed by a Bureau composed of a President, Vice President, two Secretary Generals (1st and 2nd) and two Treasurers (1st and 2nd). It has a Financial Council of a deliberative nature, composed of three full members and two substitutes, and an Advisory Committee composed of the Past Presidents. The SBE Bureau and the Financial Council are elected every two years at a General Assembly.

To achieve its objectives, the SBE is organized into departments, which in turn are subdivided into sections, which can be subdivided into commissions or specific thematic Working Groups. Currently, there are three departments and 21 sections.

By agreement with the Municipality of Campinas, state of São Paulo, the SBE is headquartered on the premises of Parque Portugal (Lagoa do Taquaral), the major tourist park of the city. Since 2005, the building houses the Guy-Christian Collet Library, one of the main collections on speleological information in Brazil and Latin America.

The SBE News is the monthly digital publication through which the SBE publishes its events and those

of its members, news, activities, and papers related to speleology. The most recent issue is [#455](#) and the whole collection (in Portuguese) can be accessed at www.cavernas.org.br/sbe-noticias.

In summary, the main actions currently promoted and carried out by the SBE are:

- Organization of the Brazilian Congress of Speleology (CBE) every two years. The 38th issue is scheduled to take place in Belo Horizonte, State of Minas Gerais, together with the 19th ICS, from July 20 to 27, 2025.
- Support of speleological events, whether regional and/or local, as long as they are promoted by associated speleo teams.



PHOTO ARCHIVE SBE

SBE Headquarters and the Guy-Christian Collet Speleological Library in Campinas (SP).





November 2019: Celebration of the SBE 50th Anniversary. Past Presidents next to the SBE Presidents Gallery and SBE Members gathered in front of the building.

- Organization, in partnership with the National Center for Research and Conservation of Caves (CECAV) the 19th International Congress of Speleology (ICS), which will combine the 38th CBE. These events will be held in Belo Horizonte, state of Minas Gerais, in 2025.
- Projects related to exploration, survey, research, education and/or conservation of caves within the scope of the Technical Cooperation Agreement between the SBE, the Brazilian multinational Votorantim Cimentos, and the Mata Atlântica Biosphere Reserve, a partnership of more than a decade.
- Publications of scientific articles, by the *Espeleo-Tema*, a Brazilian magazine dedicated to the study of caves and karst, (ISSN 0102-4701 for printed issue and ISSN 2177-1227 for digital issue). Its first issue dates back to 1970 and to date has provided information related to caves and karst in the country.
- Courses, training, and other actions in partnership with public and private entities, national and/or international, developed by the sessions, such as the

Brazilian School of Speleology (eBRe), Cave Rescue (SER), and the International Relations (SERI).

- Management of the Brazilian Cave Data (CNC), in a process of technical cooperation with the National Data of Speleological Information (CANIE), managed by the CECAV. Currently more than 23,000 caves are registered in Brazil.
- Actions and campaigns aimed at protecting Brazil's speleological heritage.

The current SBE Bureau is formed by Elizandra Goldoni Gomig (*President*), Tatiane Monteiro da Silva (*Vice President*), Kelly Sandra Ramos Santos Silva (*1st Secretary General*), Cláudia de Cássia Pessoa (*2nd Secretary General*), Pâmela Lima do Carmo Saviato (*1st Treasurer*), and Therys Midori Sato (*2nd Treasurer*). The mandate started in September 2023 and will end in September 2025. The SBE Bureau joins the 19th ICS Organizing Committee in the preparation of the event, which in 2025 will also host the major celebration of the 60th anniversary of the UIS.

3 THE 19th ICS ORGANIZERS

THE CECAV

For more than 26 years, the National Center for Research and Conservation of Caves (ICMBio/CECAV), with the support of several institutions and researchers, has contributed to encouraging science and stimulating knowledge about Brazilian speleological heritage. Through the execution of several projects and research actions, new discoveries, publications, scientific meetings, and expeditions have contributed to ensuring that the mission of conserving cave environments and their associated species is supported not only by the speleological community, but by society as a whole.

Through the Terms of Speleological Compensation Commitment (TCCs), ICMBio/CECAV has worked to repair negative impacts caused in caves by companies, which reflects in important gains for the National Program for the Conservation of Speleological Heritage. With resources from TCCs, the research center continues to develop and support projects and other conservation activities.

Currently, there are 162 projects, 268 publications, 113 scientific initiation and master's studies and actions in 70 conservation units carried out or under development, which rely on resources obtained through TCCs. In 2023, the 37th issue of the Brazilian Congress of Speleology (CBE) was held, which took place in July, in Curitiba (PR), bringing together 223 congressmen.

During the 37th CBE, the second issue of the Michel Le Bret National Speleology Award took place, an initiative by ICMBio/CECAV, in partnership with the Brazilian Speleological Society (SBE). The award aims to encourage the development and publication of scientific research, inventories, and technical solutions aimed at the conservation of cave ecosystems and associated species, as well as assisting in the management of federal conservation units with this type of environment. The winners of the award have their articles published in the *Revista Brasileira de Espeologia (RBEsp)* or in *Revista Espeleo-Tema*, in addition to receiving an amount paid in cash.

An important result highlighted by the Statistical Yearbook of Brazilian Speleological Heritage 2022, released last year, revealed the record of more than 23 thousand caves in its territory. The total of 771 new caves included in the National Registry of Speleological Information (Canie) resulted in an annual average exceeding 1,239 new caves registered in the



Cave of Cathedral, Felipe Guerra (RN).

last 14 years. The data presented seek to strengthen management and establish procedures and parameters for the environmental licensing of activities potentially impacting the Brazilian speleological heritage.

Recently, ICMBio/CECAV, with the support of the Brazilian Institute for Development and Sustainability (IABS), launched two research notices aimed at managers of conservation units (UCs) and researchers from all over Brazil focusing on conservation and management of heritage speleology in UCs, in addition to research in any area of knowledge related to these natural environments. The number of applications for the two funding calls exceeded expectations, accumulating more than 90 proposals registered.

The **Notice nº 1/2023**, aimed at the study and conservation of the national speleological heritage, had 70 submissions, reaching the amount of R\$ 17,492,419.52. For **Notice nº 2/2023**, 27 submissions were received, reaching a total value of R\$ 5,410,518.05.

The National Center for Research and Conservation of Caves continues to gather efforts so that new projects, actions, and advances continue to bring gains to the important mission of conserving the Brazilian speleological heritage, whether through ongoing projects already developed or through actions being carried out within the scope of Speleological Compensation Commitment Terms.

4 THE 19th INTERNATIONAL CONGRESS OF SPELEOLOGY



Brazil's bid to host and organize the 19th International Congress of Speleology (ICS) was unanimously approved by the International Union of Speleology (UIS) in April 2021. Since then, the organizing committee has been committed

to following all UIS guidelines to ensure the realization of a high-quality international congress in July 2025.

The 19th ICS will take place concurrently with the 38th Brazilian Congress of Speleology (CBE), promoted by the International Union of Speleology (UIS) and the Brazilian

Speleological Society (SBE), with organization entrusted to the SBE in conjunction with the National Center for Research and Conservation of Caves (ICMBio/CECAV).

Belo Horizonte was chosen as the venue for this event. It is a developed capital city, with an international airport, and, above all, because it is strategically located in the heart of the Brazilian karst, in proximity to one of the most prominent regions in karstic carbonate landscape and in the natural sciences history of Brazil - the Lagoa Santa Karst.

Additionally, the city is one of the main stages for discussions on the legal framework of the topic and hosts a high concentration of Brazilian speleologists.

5 BELO HORIZONTE, THE MINASCENTRO, AND GENERAL INFORMATION



Scenic view of BH at the Pampulha lake.

Mineirão and Mineirinho complex (above left) and the Saint Francis of Assisi Church (below right).

The capital of the state of Minas Gerais, Belo Horizonte, affectionately called BH (*Beagá*), is located 852 m above sea level. With more than 2.5 million inhabitants, it is the 6th most populous city in the country.

The metropolitan region of Belo Horizonte, a conglomerate of 34 municipalities with more than five million inhabitants, is the political, financial, commercial, educational, and cultural center of the state of Minas Gerais, which is located in southeastern Brazil.

The region accounts for some 40% of the economy and 25% of the population of the state, with BH being the

first Brazilian city to be a member of the **World Tourism Cities Federation (WTCF)**.

The region has established itself as a center for entertainment and gastronomy, as well as being the stage for numerous cultural and leisure events and a center for the development and practice of sports.

BH also has an ample network of parks and gardens for recreation. Numerous attractions will be available for visitation by congress members and/or their accompanying family members through tourist agencies or privately. Some of them will be offered as one-day trips.



CLIMATE

Belo Horizonte is surrounded by mountains and has a hot, yet temperate, climate, with annual temperatures varying from 13 °C to 29 °C, and rarely dropping below 10 °C or rising above 32 °C. During the period proposed for the congress (end of July), the following conditions are expected:

- Average temperature: 18 °C
- Minimum temperature: 13 °C
- Maximum temperature: 25 °C
- Rainfall: 9 mm (the driest period of the year in BH)
- UV index: 2
- Hours of sun per day: 9

FOOD AND DRINK

Minas Gerais is a Brazilian state known for its rich gastronomy, which brings influences from different cultures and local ingredients, resulting in unique and tasty dishes that reflect the history and traditions of the region.

Among the main products of Minas Gerais gastronomy is cheese, which was recognized as a Brazilian intangible heritage by the National Historical and Artistic Heritage Institute (IPHAN) in 2008. Minas cheese is made with raw

cow's milk and has a unique flavor and characteristic, which is the result of the climate and production techniques of the region.

In addition to cheese, Minas Gerais cuisine stands out for tropical-style beans, chicken with okra, pork ribs with cassava, pork rind, bean tutu, sausage, cheesebread, guava paste, and dulce de leche.

The gastronomy of Minas Gerais has also other intangible assets that are related to food, such as the production techniques for “*cachaça*,” which is a typical Brazilian drink derived from the distillation of sugar cane, and the so-called “*botecos*,” which are establishments specializing in craft beers and typical Brazilian appetizers. Belo Horizonte has more than 14,000 *botecos*, a concentration greater than anywhere else in Brazil.

Participants of the 19th ICS will certainly be delighted with the wide variety of typical dishes that will be served during the event. The world-famous “*Caipirinha*,” the Brazilian drink made with lime, *cachaça*, sugar, and plenty of ice will also have a guaranteed presence.

While alcoholic beverages will only be allowed for adults, the typical Brazilian food is recommended for all ages. We hope everyone will appreciate it.



PHOTO BY XARÁ



PHOTO BY PEDRO VILELA

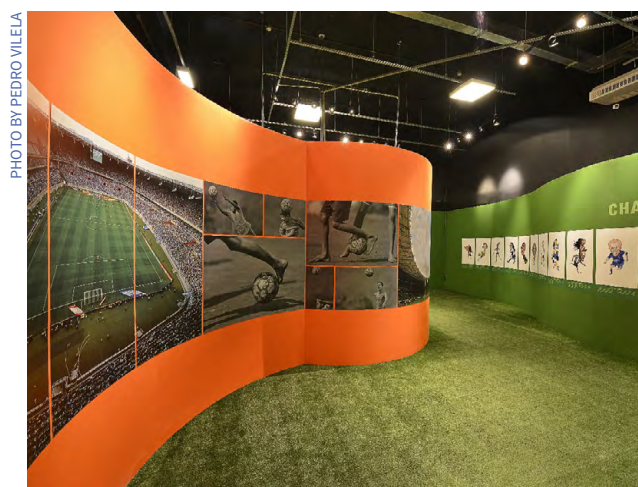


PHOTO BY PEDRO VILELA



PHOTO BY DANIELA PAOLIELLO

LEFT TO RIGHT: Casa do Baile, Mineirão Stadium, Football Museum at the Mineirão Stadium, all in BH, and Inhotim Museum.



THE VENUE

Occupying an entire city center block, Minascentro Convention Center, the 19th ICS venue, is in the heart of the city and close to a complete commercial center, with a wide range of restaurants, flats, hotels and tourist attractions.

Located just 1.2 km from the main bus station, Minascentro is 40 km from Tancredo Neves (Confins) International Airport. Its total area of more than 23,000 m²—adapted and accessible for wheelchair users—can receive up to 8,000 people simultaneously and is divided as follows:

- 3 floors
- 6 auditoriums
- 1 main theater with 1,570 seats
- 18 meeting Rooms
- 1 multipurpose room (1,368 m²)
- Areas for exposition (2,235 m²)
- A car park (80 spaces inside, but there are many options in the vicinity)
- 2 open air areas for bars and recreation

Built in 1926 to house the Health Department of Minas Gerais, Minascentro has Neoclassical style architecture and is listed by the Historic Heritage of the Municipality of Belo Horizonte.

After been completely renovated to held big events, Minascentro became one of the best options for events not only in Belo Horizonte, but throughout the country. The date of 20-27 July 2025, of course, is reserved to welcome the international speleological community. We expect the participants of the 19th ICS will find at Minascentro all the facilities to fully enjoy the event.

The Minascentro facilities and their respective areas were already shown in the [19th ICS First Circular](#), and can be seen also at <https://www.minascentro.net/>.



The main entrance of the Minascentro Convention Center, the venue of the 19th ICS.



General view of the main theater of the Minascentro Convention Center (1,570 seats).

ACCESS

Belo Horizonte is served mainly by the International Airport of Tancredo Neves, best known as the Confins Airport. It is situated some 40 km away and is linked to the center of the city by express highways.

For those who reach Belo Horizonte by car or bus, the main access roads are the BR-040, for those arriving from Rio de Janeiro (RJ) or Brasília (DF), the BR-381, for those arriving from São Paulo (SP), and the BR-262, for visitors traveling from Vitória (ES).

TRANSPORTATION

When disembarking at Confins International Airport, passengers will have several options for getting to the city. In addition to taxis and app transportation, the bus company *Conexão Aeroporto* (Airport Connection) offers direct lines to the *Terminal Conexão Aeroporto* (Airport Connection Terminal), located 700 meters from the congress venue.



© COOPERTAXI



REPRODUCTION PBH



Another company, Unir, offers buses from the airport to the BH Central Bus Station, located 1.5 km from the venue.

Once in BH, public transport offers an extensive network of circulating buses. The services of taxis and transport by app (UBER, 99, etc.) are also available at any time of the day or night.

Take into account, please, that no Dollar, Euro, or other foreign currency in cash is acceptable. To do so, have in hands your credit card or Brazilian money cash, the Real.

PHOTO BY PEDRO VILELA



Pampulha Art Museum.

DRIVING IN BRAZIL

For overseas visitors intending to rent a car and drive, here is some general information.

According to Brazilian traffic laws, drivers of a motor vehicle, coming from a foreign country and qualified therein, may drive in the national territory with a foreign driver's license during their stay in Brazilian territory within a maximum period of 180 (one hundred and eighty) days, respecting the validity of the license of origin. The foreign driver's license must be issued by countries that are signatories to international conventions or agreements, ratified and approved by Brazil. [Click here](#) to see the list.

Drivers from countries that are contracting parties to the Vienna Convention on Road Traffic of 1968, may drive in Brazilian territory, with an International Driving Permit (IDP) accompanied by a foreign driver's license, within the validity period. [Click here](#) to see the list.

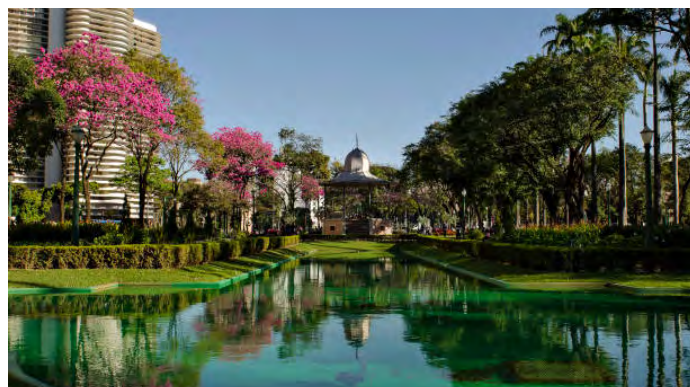
Once the above regulations can change until July 2025, to avoid any unexpected inconvenient we recommend to all participants of the 19th ICS intending to hire a car and drive, come to Brazil with an International Driving Permit (IDP) accompanied by their foreign driver's license, within the validity period.

Those who intend to rent a car will have no difficulty. However, other events that will be held in Belo Horizonte during the same period as the congress can contribute to increased demand for cars. We therefore recommend that you make your rental as early as possible.



PHOTO BY PEDRO VILELA

Rui Barbosa Square - Station Square in BH.



ARCHIVE SECUT/MG

Liberty Square.

Please, take into account that you can only drive vehicles which your overseas license authorizes you to drive and you must drive according to any conditions on your overseas license.

It is common for the police to stop drivers to take a breathalyzer test. In this case, any alcohol concentration detected (one glass of beer is enough) will result in serious punishment for the driver. Therefore, NEVER drive after drinking any alcoholic beverages.

Cars in Brazil are left-hand drive and we drive on the right.

GREEN CONGRESS

Bringing a large number of people together will have a cost in terms of our environmental footprint. The 19th ICS Organizing Committee is encouraging ways that we can reduce and minimize our environmental footprint so please consider how we can do this.

Congress registrants are encouraged to look at this information and make further suggestions on how we can minimize our environmental impacts. The following points are some suggestions on how you can contribute to this.



- **Public transport:** We encourage and promote its use as much as possible. Belo Horizonte has a great public transport system and the congress venue at Minascentro and the airport are both readily reached by a reliable bus lines. There are no train lines on this route, therefore we will be encouraging congress attendees to use these buses.
- **Drinking water:** Bottled water uses a lot of energy to manufacture and transport, and results in disposable bottles that generally become landfill or litter. During the week of the congress, drinking fountains will be spread throughout the Minascentro. Please drink and enjoy it! We therefore encourage participants to bring a refillable water bottle or use your mug received with the registration kit. We will have some re-fillable water bottles for sale at the Congress venue in case anyone needs to buy one.
- **Reduce, reuse and recycle:** We invite all registrants to try to minimize what they purchase with regards to what will be wasted, e.g. food in excess packaging and throw-away coffee cups. We will have recycling bins available around the congress area. We will also be encouraging all excursion leaders to recycle whatever they are able to. This is easier in some locations than others. But if we all do our best...
- **Please don't litter:** Naturally, if items cannot be recycled, they belong in a garbage/trash/litter bin rather than carelessly disposed of.
- **Minimize the flush:** Water is precious. Brazil has enough water in some regions but is a dry country in others. When you find toilets with buttons indicating 'full flush' or 'half flush,' please use the 'half flush' whenever you can.
- **Minimize printing:** Digital technology means that we can minimize what actually needs to be printed.

While we will print some congress materials such as the congress handbook, excursion guides, and the Proceedings as well, we encourage participants to print only what is essential to be printed.

- **Souvenirs of Brazil:** Please look for locally made products where the money supports local artists and community groups. This decreases the "product miles" which adds to environmental problems.

ACCOMMODATION

There is a range of accommodation available close to the Minascentro Convention Center at a wide range of prices. Most are within easy walking distance of restaurants and shopping. This includes hotels, inns, guesthouses, hostels, Airbnb options, and dormitories.

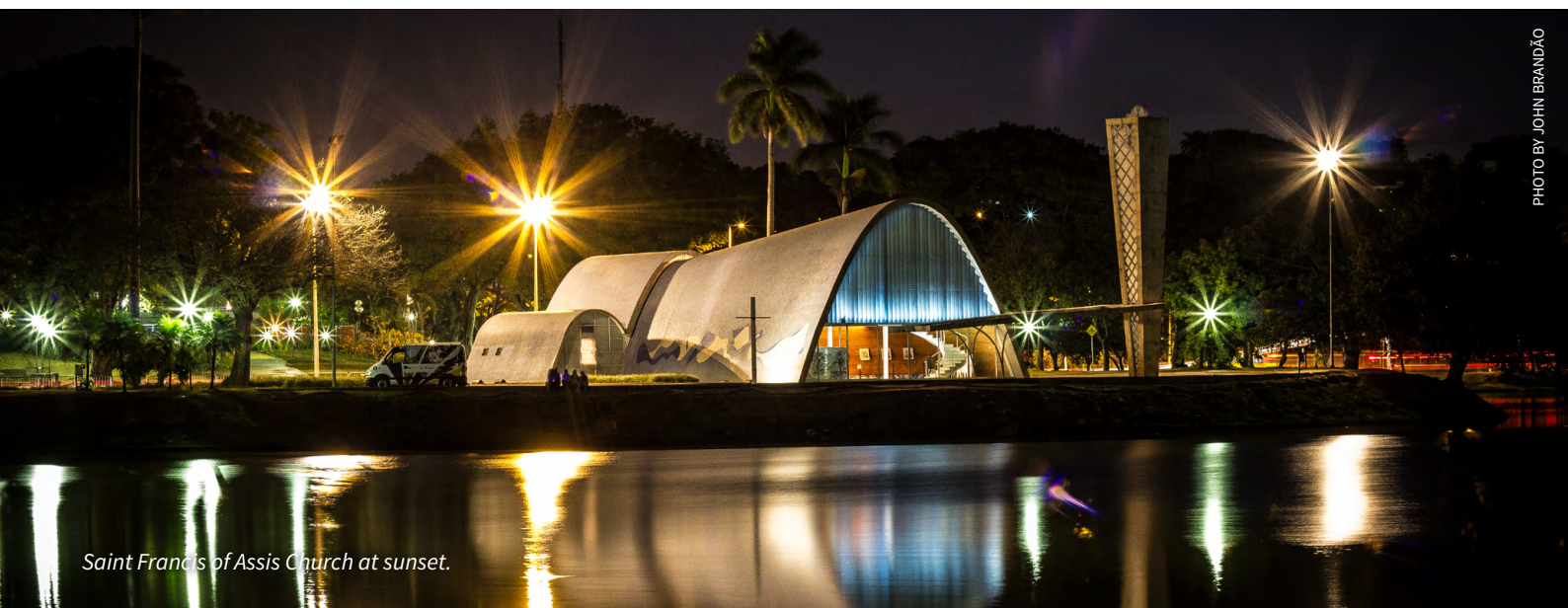
Among the establishments on the list of options is the Accor hotel chain, with which the Organizing Committee has already signed an agreement to guarantee reasonable prices for congress participants.

As accommodation will need to be booked directly with the establishment of your choice, we want to reinforce that other events will be held in Belo Horizonte during the same period as the congress, which puts pressure on accommodation at specific times. We therefore recommend that you make your reservation as early as possible.

Please note the specific addresses of accommodation will need to be sourced from the specific accommodation websites. At the moment of your reservation, please confirm whether breakfast is included in the rate or if you need to organize it separately.

Also, **remember to state in your booking that you are attending the Congress.** As the congress venue is in the center of the city, no campground will be available.

On the next page you will find the hotels from the Accor chain that are partners of the ICS and have guaranteed their best price for July 2025. Such a list is followed by another list that shows more options for accommodation.



Saint Francis of Assis Church at sunset.

PHOTO BY JOHN BRANDÃO





MERCURE HOTELS NOVOTEL HOTELS & RESORTS

• IBIS BUDGET MINASCENTRO

Reservations:

h5625-re@accor.com or +55 (33) 3343 6400

Distance to the venue: 350 m

ROOM CATEGORY	SINGLE	DOUBLE
Standard	R\$ 329	R\$ 369

• IBIS BH LIBERDADE

Reservations:

h5298-re@accor.com or +55 (31) 2111 1500

Distance to the venue: 1.2 km

ROOM CATEGORY	SINGLE	DOUBLE
Standard	R\$ 349	R\$ 399
Superior	R\$ 389	R\$ 429

• IBIS AFONSO PENA

Reservations:

h8498-re@accor.com or +55 (31) 2108 2950

Distance to the venue: 1.7 km

ROOM CATEGORY	SINGLE	DOUBLE
Standard	R\$ 349	R\$ 399

• MERCURE BH LOURDES

Reservations:

h3575-re@accor.com or +55 (31) 3298 4100

Distance to the venue: 1.8 km

ROOM CATEGORY	SINGLE	DOUBLE
Classic	R\$ 469	R\$ 529
Standard	R\$ 529	R\$ 589
Superior	R\$ 589	R\$ 649
Privilege	R\$ 649	R\$ 709

In addition to these congress partner hotels, there are other accommodation options in the Minascentro region, such as other hotels, hostels, guesthouses, inns, Airbnb, dormitories, as well.

Participants feel free to choose.

CONDITIONS:

- Prices per room in Brazilian currency (Real). Conversion to US Dollar, Euro or other currency will be done at the time of booking.
- Rates valid only for the period from 19-28 July 2025.
- Rates with breakfast and Wi-Fi included.
- Add 5% of TAX to the rates.
- Rates valid according to category availability.
- The hotels doesn't block membership rates.

• NOVOTEL BH SAVASSI

Reservations:

h8754-re@accor.com or +55 (31) 3311 9400/9401

Distance to the venue: 2.1 km

ROOM CATEGORY	SINGLE	DOUBLE
Superior	R\$ 539	R\$ 599
Executive	R\$ 599	R\$ 659

• IBIS BH SAVASSI

Reservations:

h7021-re@accor.com or +55 (31) 3888 4300

Distance to the venue: 2.1 km

ROOM CATEGORY	SINGLE	DOUBLE
Standard	R\$ 369	R\$ 419

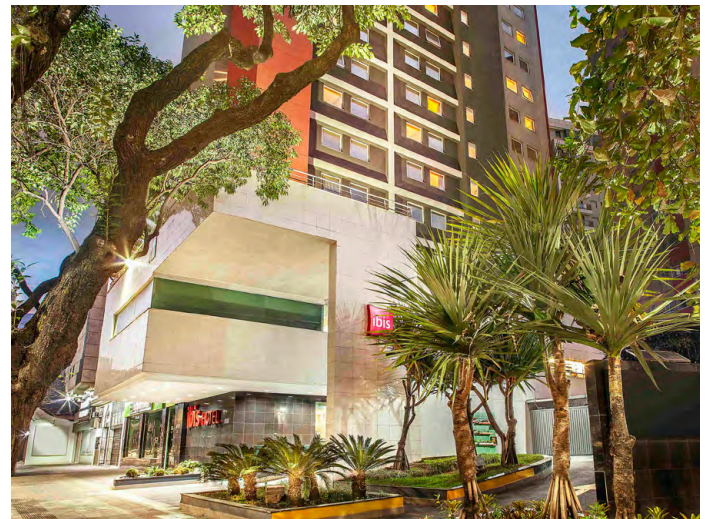
• IBIS BUDGET SAVASSI

Reservations:

h8750-re@accor.com or +55 (31) 3311 9420

Distance to the venue: 2.1 km

ROOM CATEGORY	SINGLE	DOUBLE
Standard	R\$ 289	R\$ 329



Hotel Ibis Belo Horizonte Savassi.



6 VISAS

The visa is the document granted by **Consular Representations of Brazil** abroad that allows the expectation of admission and stay of foreigners in the national territory, provided that the conditions established by law have been met.

Itamaraty (the Ministry of Foreign Affairs) is the body of the Brazilian government responsible for granting visas, which occurs through the Embassies, General Consulates, Consulates, and Vice consulates of Brazil abroad.

Brazil has adopted a policy of reciprocity regarding visas. This means that nationals of countries that require visas for Brazilian citizens will need a visa to travel to Brazil.

According to Brazilian law, Brazil must agree, on a reciprocal basis, to offer visa waivers to nationals of another country, except for the hypotheses established in Decree 9.731/2019. Brazil has signed visa exemption agreements with about 90 countries.

Citizens of countries that qualify for the Visa Waiver Program, with the proper travel documents, do not need visas to enter Brazil. For the proper procedures for applying for visas to travel to Brazil, persons intending to

participate in the 19th International Congress of Speleology should check the website of the Brazilian Embassy in their home country.

Brazilian visa policy is dynamic and changes in policies and procedures between now and the ICS in July 2025 could occur. Thus, intending visitors should take responsibility for being familiar with the visa policies and application procedures in their home countries.

In some instances, visa application procedures may take a few months, so intending ICS participants should begin their processing early.

To find out if you need a visa to travel to Brazil, read the “Entry Visas to Brazil” by [clicking here](#).

Take note, please, that the Brazilian visa will never be granted in Brazilian territory. Therefore, it is not possible to obtain your visa in airports, ports of entry, or any other point of the Brazilian border. Itamaraty and the Federal Police (agency responsible for immigration control in Brazilian borders) cannot and will not authorize the entry of foreign nationals who do not have the proper visa.

PHOTO BY EVANDRO RODNEY



Cave of Lapinha (a show cave) in Lagoa Santa-MG (50 km from the venue).

PHOTO BY SÉRGIO MOURÃO



Historic city of Mariana (115 km from the venue).



Belo Horizonte Municipal Park.

PHOTO BY ROGERIO SALGADO



Mention of the various matters to do with registration is scattered throughout this circular, but for convenience, the major points are listed here:

- **Online Registration** will commence on July 15th, 2024. Special rates will be offered for early registrations. See table on [page 21](#).

Among the benefits of registering early are: reduced costs of flights, greater choice of accommodation when booked well ahead, full choice of pre- and post-congress trips, and more time to get excited and plan for your trip to Brazil.

- **All registration** is required to be via the Congress website registration page <https://www.speleo2025.org/information/registration> unless specifically negotiated with the Organizing Committee of the 2025 ICS.
- **For security, legal, and insurance purposes**, anyone attending the congress must be a registered attendant and display their registration identification badge.
- **There are four types of registration:** Full, Partial, Child, and Day Participant. Entitlements for each category are described as follows and also in the table on the next page.

FULL PARTICIPANT

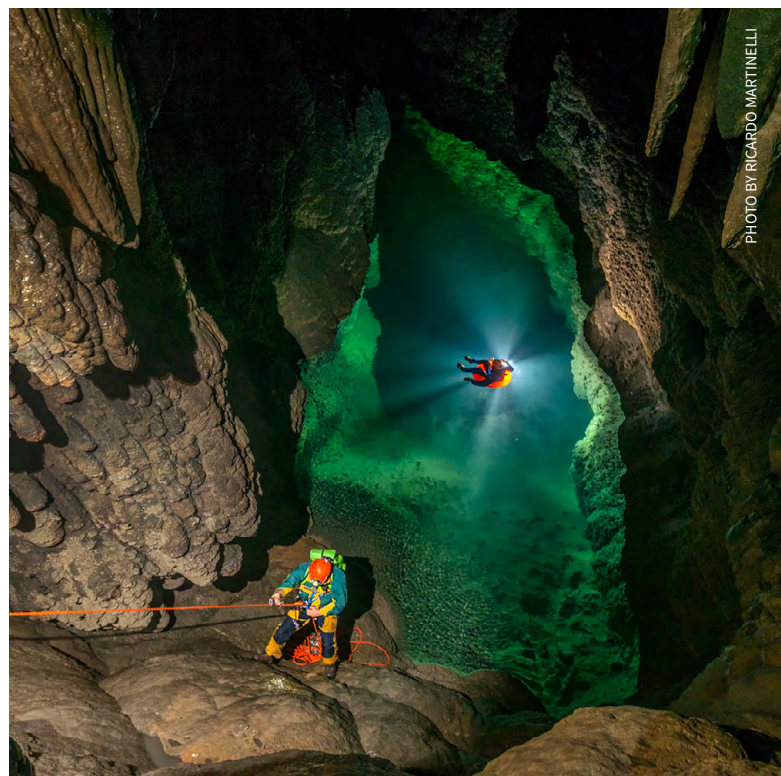
These participants have the right to present oral communications, posters, videos, photographic shows, and exhibits, and attend any activity of the ICS.

They will also receive a printed copy of the ICS Program, a printed copy of the ICS Proceedings, a certificate of participation, certificates for each paper presented that is published in the Proceedings, as well as a T-shirt, a mug, and a bag to hold ICS materials.

The Wednesday excursion and Closing Banquet tickets will be included in this category as well, at no additional fee.

PARTIAL PARTICIPANT

They will have the right to attend any activity of the ICS. They will receive a certificate of participation, a printed copy of the ICS Program, a digital copy of the ICS Proceedings, and a bag to hold ICS materials. Although extra activities (excursions, banquets, etc.) are not included in this category, they are welcome for an additional fee.



Lago Suspenso Cave in Iporanga-SP.

CHILD PARTICIPANT

Children 6-15 years of age will receive an identification badge, a printed copy of the ICS Program, a certificate of participation, a digital copy of the ICS Proceedings, a bag to hold ICS materials, and may attend all ICS activities. They must be a family member or supervised by an adult full participant who will be responsible for their care.

The ICS Organizing Committee intends to provide special entertaining and educational activities for children. At additional cost and subject to the approval of the excursion organizer and available places, they may book and join ICS field excursions in the company of their responsible (pre- and/or post-congress). Please check the list of excursions to see whether the excursion is suitable for accompanying children before booking.

Children under 6 years are free.

DAY PARTICIPANT

These individuals register to attend the ICS for one day and have the right to attend any ICS activity for that day. They will receive the ICS Program, a bag to hold ICS materials, and an identification badge that clearly identifies the day they can participate. The Day Participant may purchase the ICS Proceedings and other ICS materials.

This category can only be applied to the 21st, 22nd, 24th, or 25th of July 2025.

ENTITLEMENTS	FULL PARTICIPANT	PARTIAL PARTICIPANT	CHILD PARTICIPANT	DAY PARTICIPANT
Attendance identificationn badge	✓	✓	✓	✓
Certificate of participation	✓	✓	✓	✓
Bag to hold ICS materials	✓	✓	✓	✓
Digital copy of the ICS Proceedings	✓	✓	✓	✓
Printed copy of the ICS Proceedings	✓	-	-	-
Printed copy of the ICS Program	✓	✓	✓	✓
T-shirt, mug, and pin	✓	-	-	-
Visit congress exhibition displays and salons	✓	✓	✓	✓
Attend all sessions	✓	✓	✓	✓
Attend the complimentary welcome party event	✓	✓	✓	-
Participate in competitions	✓	✓	-	-
Attend all meetings	✓	✓	-	-
Participate in SpeleOlympic event	✓	✓	-	-
Attend short courses and workshops	✓	✓	-	-
Present papers, posters, videos, photographic shows, and exhibits at the congress	✓	-	-	-
Certificates for each paper presented that is published in the Proceedings	✓	-	-	-
Book space and display and or sell goods or services at the congress	✓	-	-	-
Attend the Wednesday excursion for free	✓	-	-	-
At additional cost, book and join Wednesday excursion	-	✓	✓	-
At additional cost, book and join pre- and/or post-congress trips (subject to available places)	✓	✓	✓	✓
Attend the Closing Banquet for free (under previous confirmation)	✓	-	-	-
At additional cost, book and attend the Closing Banquet (under previous confirmation)	-	✓	✓	-

19th ICS REGISTRATION SCHEDULE AND FEES

TIMELINE	APPLICABLE DATES	REGISTRATION CATEGORIES	FEES (REAIS R\$)*	CLOSING BANQUET	WEDNESDAY TRIP	PRINTED PROCEEDINGS	TOTAL
Registration opens	July 15 th 2024	On-line registration	-	-	-	-	-
Early registration 1/4 of the price (75% discount)	July 15 th 2024 to January 31 st 2025	Full Participant	600	Free	Free	Free	600
		Partial Participant	360	100	100	200	760
		Child Participant	180	100	100	200	580
		Day Participant**	-	-	-	-	-
Intermediate registration 1/3 of the price (66,6% discount)	February 1 st 2025 to May 15 th 2025	Full Participant	800	Free	Free	Free	800
		Partial Participant	480	100	100	200	880
		Child Participant	240	100	100	200	640
		Day Participant**	160	-	-	200	360
Regular registration 1/2 price (50% discount)	May 16 th 2025 to June 30 th 2025	Full Participant	1.200	Free	Free	Free	1.200
		Partial Participant	720	150	150	200	1.220
		Child Participant	360	150	150	200	860
		Day Participant**	240	-	-	200	440
Late registration Full price (no discount)	July 1 st 2025 to the event	Full Participant	2.400	Free	Free	Free	2.400
		Partial Participant	1.440	300	300	300	2.340
		Child Participant	720	300	300	300	1.620
		Day Participant**	480	-	-	300	780

* Prices in Brazilian currency (Real) - All prices include Brazilian taxes.

** Day registration rate, per day. This category can be applied for only one day, that is, to the 21st, 22nd, 24th, or 25th of July 2025.

REFUND POLICY

The 19th ICS Refund Policy will follow the provisions of Brazilian legislation regarding consumer rights.

The 19th ICS registrations can be canceled and refunded in full within 7 days of payment being made. After this period, it is not possible to cancel the registration and refund it.

Cancellation of registrations less than two days in advance of the event is not subject to refunds. The author of a paper submitted for the 19th ICS that is not approved by the Scientific Committee may request the cancellation of their registration. In such a case, the total amount paid for the registration will be fully refunded.

Tolerance deadlines for manifestation may apply in these cases, which will be communicated to the authors.

Refunds will be made using the official Brazilian currency (Real – R\$), and exchange rate variations may be applied at the time of reimbursement for foreign registrations.

Pre- and post-Congress trips may not be subject to cancellation in the case of transport (air tickets) already purchased or other expenses already incurred by the organization. On the other hand, as some trips may be canceled for lack of participation, the participant will have the investment returned (if already paid).

If the participant decides not to attend the 19th ICS and wants to transfer their registration, or has any other questions, please contact the organization via email registrations@speleo2025.org.



8 INVITATION TO VENDORS AND EXHIBITORS

The Organizing Committee of the 19th International Congress of Speleology invites your club or business to become a vendor and/or exhibitor in Belo Horizonte in 2025.

The exhibition and vendor area will be located on the second floor of the Minascentro Convention Center. About 10,000 m² will be available for this important part of the congress, with spaces that need to be reserved in advance.

As there is a limited number of spaces, the earlier you reserve, the greater the chance of securing one.

Spaces will be reserved upon payment of a fee for companies wishing to showcase their brand, while spaces will be provided free of charge for non-profit organizations or vendors of local products or products related to speleology, provided that at least one representative from the space is registered as full participant of the congress.

Consignment sales will be available for those who do not wish to staff a stall for the week but have a few items to sell.

Each UIS member country bidding for the opportunity to host the 20th ICS 2029 will have free space for that.

To reserve a space and obtain general conditions, please contact exhibitor_vendor@speleo2025.org after September 30th, 2024.

While the deadline for space reservations is February 15th, 2025, please remember that there is a limited number of spaces available on a first-come, first-served basis. Therefore, make your reservation as early as possible.



PHOTO BY RICARDO MARTINELLI

Cave of Ouro Grosso in Iporanga-SP.



PHOTO BY DANIEL MENIN

Maroaga Cave (Sandstone Rock) in Presidente Figueiredo-AM.



9 CALL FOR PAPERS

ARCHIVE JOSÉ A. LABEGALINI



Água Suja Cave in Iporanga-SP.

The general themes of the 19th ICS will be mostly organized as plenary sessions, but parallel sessions will also be scheduled, as well as poster sessions. They will propose covering a wide range of categories, such as cave and karst sciences, management, education, exploration, equipment, exploration techniques, and medical sciences.

PRESENTATION SUBJECTS

All proposed presentations should be related to speleology but can be on any scientific, technical, cultural, or educational aspect. The 19th ICS will offer general sessions, sub-sessions, and special sessions, if necessary. Many of them will include invited presentations and all welcome volunteer submissions.

If sufficient suitable papers are offered in specific areas, extra sessions will be organized. The specific session topics will be determined by the papers submitted.

SESSIONS AND SUBSESSIONS

The sessions and sub-sessions currently envisaged are:

- Archeology in Caves
- Paleontology in Caves
- Subterranean Biology
- Karst Geomorphology
- Karst Geochronology, Paleoclimatology, and Climate Change
- Karst Climatology and Monitoring
- Karst Hydrogeology and Speleogenesis

- Pseudokarst and Non-Traditional Karst
- Cave Mineralogy and Sediments
- Artificial Cavities
- Volcanic Caves
- History of Speleology
- Cave and Karst Protection and Management
 - *Legislation*
 - *Cave and Karst Tourism*
 - *Environmental Education*
 - *Arts and Letters*
 - *Audio and Video Productions*
- Exploration, Speleological Techniques, and Materials
 - *Exploration*
 - *Cave Diving*
 - *Topography, Mapping, 3D Scanning, and Documentation*
- Cave Rescue
- Special Topics

In addition to the regular sessions, twelve fascinating symposia are scheduled, as follows:

- Symposium on Subterranean Biology
- Symposium on Chiropteroфаuna
- Symposium on Paleontology in Caves
- Symposium on Archeology in Caves
- Symposium on Cave Diving
- Symposium on Cave and Karst Protection and Management
- Symposium on Caves in Ferruginous Rocks
- Symposium on Artificial Cavities
- Symposium on Cave Mineralogy
- Symposium on Arts and Letters
- Symposium on Glaciars, Firn, and Ice Cave
- Symposium on Karst Geology

SUBMISSION INSTRUCTIONS

To further enhance the quality of the event, the submission format has been updated. From now on, only expanded papers will be accepted, with a minimum of 03 (three) pages and a maximum of 06 (six) pages, replacing the 30-line abstracts previously announced in the Second Circular. When submitting your paper in the Participant Area, select the appropriate session and indicate your preferred format: oral presentation or poster. Access to the Participant Area will be available after Congress registration, using the email and password provided during the registration process.



If the number of requests for oral presentations exceeds the available time for each session, the coordination team will select the presentations. Any remaining works will be presented in poster format.

Papers submitted after the deadline or not following the required format will not be accepted. Registration as a Full Participant is mandatory for paper acceptance, and for papers with multiple authors, at least one author must fulfill this requirement. The Scientific Committee will review the submissions and may accept, reject, or request revisions from the authors.

1. Maximum Number of Works per Author:

Each author may submit up to 3 papers as the primary author.

2. Mandatory Registration:

Paper submission requires payment of the registration fee under the “Full Participant” category.

3. Maximum Number of Authors per Paper:

Each paper may have a maximum of 8 authors.

4. Submission Format:

Paper must be submitted in full, following the template provided.

FORMAT

Portuguese and English will be the primary languages of the 19th ICS, and no translation services will be provided. Participants are welcome to present their papers in any of the official UIS languages other than English—French, German, Italian, Russian, or Spanish—but must include an abstract in English.

ORAL PRESENTATION

Oral presentations will be allocated a total of 20 minutes, including time for questions and answers. If a translator is needed, their presence is permitted, but the 20-minute limit must still be respected. We recommend that authors plan for a 15-minute presentation, leaving the remaining 5 minutes for questions.



PHOTO BY LUCIANO FARIA

Cave of Mosquitos in Curvelo-MG.

POSTER

The poster should be 90 cm wide and 120 cm high. It must feature the 19th ICS logo in the upper right corner, along with a clear title, the names of the author(s), their institutional affiliation, and contact details. The poster should present information on materials and methods used, results obtained (even if preliminary), and conclusions. Visual elements such as photos, figures, tables, and maps are encouraged. Authors are expected to be present to discuss their work with other participants.

If you have any questions, please do not hesitate to contact the Scientific Coordinator of the 19th ICS, Dr. Rodrigo Lopes Ferreira - scientificcomission@speleo2025.org.

IMPORTANT DEADLINES

Submission of abstracts for papers and posters:
by January 20, 2025

Notification of acceptance of abstract:
by February 17, 2025

For accepted abstracts, the following deadlines apply

Submission of the revised paper:
by March 21, 2025

Submission of the final version of the paper and copyright release:
by April 15, 2025.



PHOTO BY ATALIBA COELHO

Maroaga Cave (Sandstone rock) in Presidente Figueiredo-AM.



10 INTERNATIONAL CAVE ARTS SALONS AND SPELEMEDIA



Cave S11A-0036 (Ferruginous rock) in Carajás-PA.

A variety of competitions are organized traditionally during the UIS Congresses: photographic exhibition (Photo Salon), presentation of maps (Cartographic Salon), and art (Art Salon) related to caves, karst, and caving. In addition, there will be a competition for the best film with the same theme called SpeleMedia.

Such salons intend to promote and recognize excellent cave-related art and artists. They are open to everyone, regardless of caving affiliation or attendance at the Congress.

The ICS Salons fully support the pro-imaging **Bill of Rights** (www.pro-imaging.org) which UIS accepted and has followed since 2009.

No entry fee is required. Rules and entry forms will be available on the 19th ICS website www.speleo2025.org after September 30th.

All materials submitted must be removed from the exhibition site by 11 am on Saturday, July 26th, 2025. Author(s) who are unable to remove their material by this deadline agree to donate them to the UIS or to the Brazilian Speleological Society (SBE).

PHOTO SALON

The Photo Salon celebrates the ephemeral beauty of images of caves and caving. In such a way, cave photographers from around the world are strongly encouraged to submit their photographic prints, either as entries in the competitive Print Salon.

This is a fantastic opportunity to have your work displayed, appreciated, and rewarded before an international caving audience. All entries will be on display from 21-26 July 2025 at the 19th ICS venue.

To submit your photo, contact **Alexandre Lobo** after September 30th 2024 by email photo_salon@speleo2025.org.

CARTOGRAPHIC SALON

All cartographers are invited to submit entries for the Cartographic Salon. This competition blends both technical expertise and artistic depiction. Maps may be submitted for judging or for display only.

Judging will occur during the ICS by a team of experienced cave cartographers. All maps will be displayed.

Categories are not yet finalized but will encompass digital and hand-drawn maps depicting caves and karst features. This competition blends both technical expertise and artistic depiction.

To submit your map, contact **Ricardo Martinelli** after September 30th 2024 by email

cartographic_salon@speleo2025.org.

ART SALON (SPELEOART)

SpeleoArt is the International Congress venue for exhibiting speleologically inspired artwork. Artwork can be in any medium and sketching to digitally altered photography, computer graphics, pottery and sculpture, textiles, and mixed media. The subject must involve karst and caves, focusing on the central interest of speleology. All artwork must be original.

To submit your speleo art, contact **Birgitte Tümmeler** after September 30th 2024 by email

speleoart_salon@speleo2025.org.



PHOTO BY JOSÉ A. LABEGALINI

Lapa dos Desenhos (Peruaçu Caves National Park) - Itacarambi-MG.



PHOTO BY JUNIOR PETAR

Aerial view of Casa de Pedra Cave (215 meter high entrance) - Iporanga-SP.

SPELEMEDIA

SpeleMedia is a competition among producers of moving-image depictions related to caves, cavers, caving, and cave conservation/restoration. Time permitting, all entries will be shown at the ICS.

SpeleMedia is open to anyone, amateur or professional, regardless of affiliation with caving organizations or attendance at the Congress.

To submit your video, contact **Leda Zogbi** after September 30th 2024 by email

spelemidia_salon@speleo2025.org.

OTHER POSSIBLE SALONS

In addition to the traditional competition Salons and SpeleMedia, the 19th ICS will offer space for different expositions related to caves and caving, such as:

- T-shirts
- Stickers and Labels
- Symbolic Emblems
- Stamps
- Cave Equipments

Those interested in organizing these exhibitions, or others, please contact **Rafael Balestrieri** after September 30th 2024 by email other_salons@speleo2025.org.

11 ORGANIZATIONAL AND SOCIAL ACTIVITIES

The 19th ICS, in addition to the official program and many meetings that will be held throughout the week, will be a wonderful opportunity to build and strengthen friendships and enrich networks with colleagues around the world, even during relaxing times.

In such a way, several activities will be prepared for the entertainment of the 19th ICS participants at the end of the afternoons.

MEETINGS OF UIS COMMISSIONS AND OTHER ORGANIZATIONS

Meetings of individual UIS Commissions and Working Groups, as well as of national and regional speleological associations, are a very important part of the Congress. The organizers of these meetings are asked to contact the Organizing Committee by email meetings@speleo2025.org after September 30th 2024 to assist in the scheduling of these meetings.

BANQUETS

Four outstanding banquets or cocktails will be offered during the Congress. The meals will be prepared by the best caterers in Belo Horizonte and region.

- **Opening cocktail:** after the opening ceremony of the congress on Sunday, July 20th, participants are invited to the welcome party, where typical Minas Gerais appetizers will be served accompanied by Brazilian music. This welcome cocktail is included in the registration price.
- **UIS 60th Anniversary:** On the evening of Monday, July 21st, a special cocktail will be offered to celebrate the history and the success of the UIS. As part of this party we will have the launch of the book 60 YEARS OF THE UIS - 1965-2025, by José Ayrton Labegalini, UIS past President 2001-2005.
- **Michel Lebrete Award:** On the evening of Tuesday 22nd, we will have the third issue of the Michel Lebrete Award, which aims to recognize and reward works of greatest relevance for the management and conservation of Brazilian speleological heritage. It is an initiative of the National Center for Research and Conservation of Caves (ICMBio/CECAV) in partnership with the Brazilian Speleological Society (SBE).

- **ICS Banquet:** The Closing Banquet on Saturday, July 26th, will be full of attractions and friendship, in a festive atmosphere.

Among them is the UIS Prizes, which awards the main achievements of world speleology in the period between two ICSs in different categories, such as the most significant publication about caves or a karst-related topic, the most significant discovery/exploration, the best poster displayed at the congress, among others.

The cost of this banquet is included in the price of full registrants. Participants of other categories (except one day) are also invited to attend by extra fee.

SPELEOLYMPICS

A series of speleological simulators will be installed inside the Minascentro, the 19th ICS venue, where candidates will have the opportunity to test their skills and participate in the SpeleOlympics competition. A detailed overview of categories and competition criteria will be given later on the Congress website.

AWARDS EVENING

On the evening of Friday, July 25th everybody will enjoy the revelation of the winners of the various competitions and contests held throughout the week of the Congress.

SHORT COURSES

Theoretical and practical courses of short duration will be offered as a pre-ICS activity. The themes, duration, exact number of hours, and program will be available on the Congress website.

Those interested in proposing courses, please send a project by January 31st 2025 to committee@speleo2025.org.



PHOTO BY MAURICIO OLIVEIRA

Cave of Maquiné in Cordisburgo (122 km from the venue).

OTHER DEADLINES INFORMATION

Summary of Dates

SCHEDULES & ACTIONS	APPLICABLE DATES	DETAILS
• Registration opens	July 15 th 2024	Online, via www.speleo2025.org
• Paper & Poster abstract submission close	November 20 th 2024	
• Notification of abstract acceptance • Early registrations (75% discount) close	January 31 st 2025	
• Proposals for short courses close	January 31 st 2025	
• Requesting space for other salons/exhibitions close	February 15 th 2025	
• Reservation and payment of vendor or exhibitor space close	February 15 th 2025	
• Applications for free vendor or exhibitor spaces close	February 15 th 2025	
• Full paper manuscript submission close	February 28 th 2025	
• Final revisions & copyright release	April 15 th 2025	
• Pre- and post-congress trips close • Intermediate registrations (66,6 % discount) close	May 15 th 2025	
• Photographic competition entries close	May 15 th 2025	
• Cartographic competition entries close	May 15 th 2025	
• Mid-week (Wednesday) excursions close • Regular registrations (50% discount) close	June 30 th 2025	
• Pre-congress trips	July 11 th to 19 th 2025	Dates are different for some trips
• Conference	July 20 th -27 th 2025	
• Post-congress trips	July 28 th to August 5 th 2025	Dates are different for some trips



Cave of Brejões in Morro do Chapéu-BR.



Cave of Crotes in Felipe Guerra-RN.



GENERAL CONGRESS SCHEDULE

DATE - JULY 2025	MORNING	AFTERNOON	EVENING
Sat 19	Return from pre-ICS Field Trips (all day) UIS Bureau Meeting	UIS Bureau Meeting	No evening program Venue closed
Sun 20	Registration (all week) SpeleoArt Reception Registration of General Assembly Delegates First UIS General Assembly	Registration (all week) SpeleoArt Reception First UIS General Assembly	ICS Opening Ceremony Welcome party
Mon 21	Scientific and Technical Presentations Symposia Meetings Plenary Lecture 1	SpeleMedia Scientific and Technical Presentations Symposia Meetings	UIS 65 th Anniversary Ceremony Special Celebration
Tue 22	SpeleMedia Scientific and Technical Presentations Symposia Meetings Plenary Lecture 2	SpeleMedia Scientific and Technical Presentations Symposia Meetings	Michel Le Bret Prize Award Ceremony Evening Program
Wed 23	Field Trips	Field Trips	Evening Program
Thu 24	SpeleMedia Scientific and Technical Presentations Symposia Meetings Plenary Lecture 3	Photo Salon Presentation Scientific and Technical Presentations Symposia Meetings	Evening Program
Fri 25	Scientific and Technical Presentations Symposia Meetings Plenary Lecture 4	Scientific and Technical Presentations Symposia Meetings	Salons and SpeleMedia Awards' Ceremony SpeleOlympics Awards' Ceremony Evening Program
Sat 26	Best of SpeleMedia 3D Presentation Meetings	Best of SpeleMedia 3D Presentation Meetings	ICS Banquet UIS Prizes Award Ceremony
Sun 27	Scientific and Technical Presentations ICS Closing Ceremony Second UIS G. Assembly	Brazilian Speleological Society General Assembly Second UIS General Assembly UIS Bureau Meeting	Farewell Evening
Mon 28	Post-Congress trips departure (or as arranged)		



12 DAY TRIPS

CAVING TRIPS

During the Congress, there will be opportunities to do what has brought us all together, go caving! Some trips will be offered to caves of all different types in the vicinity of Belo Horizonte.

They will be one-day trips, and the list of options and the details for participation will be announced on the Congress website.

CULTURAL AND FAMILY TRIPS

Each day during the Congress, there will be opportunities to visit the best tourist and cultural attractions of Belo Horizonte and the region. These outings are suitable for the whole family to get away, try typical food, and have some fun.

These trips range from museums and parks to more adventurous outdoor activities, like riding through the Pampulha Lake, with a total circuit of almost 18 km. In the vicinity of BH and a little further, numerous options will be offered at a distance of up to 120 km, including show caves and historic cities.

Some of these trips will be on the list of Wednesday excursions, but they can also be carried out on other days of the congress.

Depending on the destination, trips will range from a half to a full day and all of them will return by dinner time.

Those interested can access the list of options and book these tours directly at the venue, through the 19th ICS Travel Agent, which will be announced on the ICS website.

PHOTO BY SÉRGIO MOURÃO



Gold Mine of Passagem in Mariana-MG (120 km from the venue).

PHOTO MM GERDAU ARCHIVE



MM Gerdau Museum in BH.

PHOTO BY PEDRO VILELA



Mineirão Stadium in BH.

PHOTO BY PEDRO VILELA



Aleijadinho Sculptural Complex in Congonhas-MG (80 km from the venue).



13 WEDNESDAY TRIPS

As per the tradition of the International Congresses of Speleology, Wednesday is dedicated to day trips, which are concentrated in the vicinity of the Congress's venue or

which are made possible by land transport that is feasible in time. For the 19th ICS, Wednesday, July 23, 2025, the following itineraries are on the program:



OPTIONS FOR WEDNESDAY TRIPS



1

City tour in Belo Horizonte

2

Cultural Complex of the Liberty Square (in BH)

3

Arquitetural Complex of Pampulha and the Mineirão Stadium (in BH)

4

Park of Mangabeiras and trip to the Outlying Rola Moça Mountain Range (in BH)

5

Caves in the Ferruginous Rock of the Quadrilátero Ferrífero (40 km)

6

Sumidouro Lagoon and Lapinha Show Cave in Lagoa Santa (40 km)

7

Lapa de Cerca Grande Archeological Site in Matozinhos (60 km)

8

Inhotim - the largest open-air museum in the world in Brumadinho (60 km)

9

Aleijadinho Sculptural Complex in Congonhas (80 km)

10

Cave of Igrejinha and Ouro Branco Mountain Range (90 km)

11

The Colonial Baroque in Ouro Preto (100 km)

12

Gold Mines and Museums in Ouro Preto (100 km)

13

Serra do Cipó National Park in Santana do Riacho (100 km)

14

Kiwa Cave, Itacolomi State Park (100 km)

15

Gogô Archeological Site and the Gold Mine of Passagem in Mariana (120 km)

16

Show Caves of Rei do Mato in Sete Lagoas and of Maquiné in Cordisburgo (120 km)



WT-01- City tour in Belo Horizonte

Belo Horizonte, the charming capital of the state of Minas Gerais, is a destination that mixes modernity and tradition. With its striking architecture, lush parks, and vibrant cultural scene, the city offers visitors a unique experience. Discover the charm of the mountains that surround it, taste delicious Minas Gerais cuisine, and explore the rich history of every corner.

WT-02 - Cultural Complex of Liberty Square in BH

The complex of Liberty Square is a historical icon of Belo Horizonte. This space houses palaces and gardens that tell the rich history of Minas Gerais. With its architecture, museums and cultural spaces, the Liberty Square is an invitation to contemplate and immerse yourself in local culture. Discover the elegance of a preserved past and experience the contemporary energy of this architectural jewel. In addition, visit the Gerdau Museum of Mines and Metals, Minas Gerais Vale Memorial, among other attractions.

WT-03 - Architectural Complex of Pampulha and the Mineirão Stadium

The Pampulha Complex is where Oscar Niemeyer's visionary architecture meets natural beauty. There are the iconic Saint Francis of Assisi Church (the symbol of BH), the Pampulha Art Museum and the Mineirão Stadium with the Football Museum. This harmonious set of attractions offers a unique experience, combining culture, sport and beautiful landscapes.

WT-04 - Park of Mangabeiras and Trip to the Outlying Rola Moça Mountain Range in BH

The exuberant nature of Belo Horizonte is also evident in Parque das Mangabeiras and the majestic Rola Moça Mountain Range. The park, with its spacious gardens and trails, offers a serene refuge in the heart of the city, while Rola Moça offers a wide view of the city and beyond.

WT-05 - Caves in the Ferruginous Rock of the Quadrilátero Ferrífero (40 km)

There are thousands of caves in the ferruginous rock in the heart of the called *Quadrilátero Ferrífero*, 40 km from Belo Horizonte. In an immersion into the geological history of the region, these caves reveal the secrets of the precious ore that played a crucial role in the economic formation of Brazil. It is an adventure through underground corridors with unique natural formations, which provides a tourist experience that combines the grandeur of nature with the industrial legacy of the area.

WT-06 - Sumidouro Lagoon and Lapinha Cave Show Cave in Lagoa Santa (40 km)

The Cave of Lapinha is located in the Park of Sumidouro in Lagoa Santa, 40 km from Belo Horizonte.

Its unique formations are the result of the marks of an underground river, originating from limestone rocks formed by the marine remains of the Rio das Velhas basin. In addition to the cave, visitors can explore the Peter Lund Museum, which features an exhibition dedicated to the naturalist and his discoveries in the region in the 19th century, displaying significant fossils. Ideal for families, the park offers activities such as climbing and trails, culminating in the viewpoint of the Sumidouro Lagoon.

WT-07 - Cerca Grande Archeological Site in Matozinhos (60 km)

In the district of Mocambo, Matozinhos, 60 km from Belo Horizonte, the Cerca Grande State Park is located in a karst region that was a pioneer in speleology, archeology and Brazilian paleontology. The park was explored and studied by Peter Wilhelm Lund in 1837, who is considered the father of Brazilian paleontology. Among its heritage, one cave displays around 100 rock engravings, depicting hunting scenes and Pleistocene animals found by Lund.

WT-08 - Inhotim - the Largest Open-Air Museum in the World in Brumadinho (60 km)

The Inhotim Institute is an artistic and botanical oasis located in Brumadinho, 60 km from Belo Horizonte. With more than 500 hectares of lush gardens and contemporary art galleries, the complex offers a unique experience where nature and culture intertwine. Works by renowned national and international artists are displayed amidst a tropical landscape. A sensory journey that transcends borders, Inhotim Park is an unmissable stop for art and nature lovers.

WT-09 - Aleijadinho Sculptural Complex in Congonhas (80 km)

In the historical richness of Congonhas, 80 km from Belo Horizonte, this is where the Baroque comes to life. Home to the Sanctuary of Bom Jesus de Matosinhos, a UNESCO World Heritage Site, Congonhas displays iconic sculptures by Aleijadinho (artist from Minas Gerais), silent witnesses to 18th-century art and devotion. Amidst the stone slopes, discover the cultural legacy of this charming city, which splendidly preserves Brazil's Baroque heritage.

WT-10 - Cave of Igrejinha and Ouro Branco Mountain Range (90 km)

The charming Serra do Ouro Branco State Park, 90 km from Belo Horizonte, a jewel in the south of the Espinhaço Range. Highlight is Igrejinha Cave, the largest dolomitic marble cave in the *Quadrilátero Ferrífero*, classified as a natural heritage site. In addition to its rare speleological genesis, the area offers historical, scientific and cultural value. Ouro Branco Mountain Range is a watershed between three important river basins in the region: Velhas River and Paraopeba River, tributaries of the São Francisco River, and Piranga River, a contributor to the Doce River basin.



WT-11 - The Colonial Baroque in Ouro Preto (100 km)

It is possible to travel back in time exploring the cobblestone streets and baroque churches of Ouro Preto, 100 km from Belo Horizonte, a historical jewel of Minas Gerais. This colonial city, declared a UNESCO World Heritage Site, reveals the opulence of the Gold Cycle in its richly decorated churches and museums that tell the saga of mineral wealth. With its imposing architecture and landscapes characterized by rocky ridges and embedded valleys, Ouro Preto is an invitation to immerse yourself in the history of colonial Brazil.

WT-12 - Gold Mines and Museums in Ouro Preto (100 km)

Testimony to the roots of colonial Brazil in Ouro Preto, 100 km from Belo Horizonte, where the old gold mines tell the story of the Gold Cycle. Among the mountains, explore fascinating museums that preserve the region's historical and cultural richness. Witness the grandeur of the Gold Cycle while you walk the trails that reveal traces of mining splendor. Ouro Preto offers an enriching journey through the past, where museums and mines become portals to the country's rich heritage.

WT-13 - Serra do Cipó National Park in Santana do Riacho (100 km)

Known as the "Garden of Brazil", Serra do Cipó, 100 km from Belo Horizonte, dazzles with its waterfalls, canyons and rock formations. With altitudes between 700 and 1,670 meters, it is an important divider between the São Francisco and Rio Doce basins. Its diverse geology and rugged relief result in a rich flora with more than 1,700 species. The fauna, equally fascinating, reveals the unique evolution of the mountainous environment. As you explore this region, witness the history that dates back to prehistoric times, from the arrival of the first inhabitants to the transformation of economic activities, highlighting tourism as a growing force in the last decade.

WT-14 - Kiwa Cave, Itacolomi State Park (100 km)

Itacolomi Peak, 100 km from Belo Horizonte, is a historic landmark in Ouro Preto and Mariana, where the pioneers called "*bandeirantes*" explored the region in search of alluvial gold in the 17th century. Rising to 1,762 meters, this monadnock of quartzite rocks rests on a plateau 1,500 meters above sea level. Its caves, located in blocks of rocks transported like a tectonic nappe, reveal remarkable speleological potential. Explore the historical and natural richness of this icon that witnessed the beginnings of mineral exploration in Brazil.

WT-15 - Gogô Archeological Site and the Gold Mine of Passagem in Mariana (120 km)

The emergence of the region known today as Minas Gerais is closely linked to gold exploration. The first area that obtained the determined metal was the region between Ouro Preto and Mariana, respectively 100 and 120 km from Belo Horizonte, called *Morro de Santo Antônio* and *Morro Santana*. These are two very expressive complexes from a heritage and historical point of view, equipped with structures, mainly in stone masonry, related to the history of mineral exploration throughout the 18th, 19th and 20th centuries. Despite their proximity to urban areas, they still have structural buildings in good condition.

WT-16 - Show Caves of Rei do Mato in Sete Lagoas and of Maquiné in Cordisburgo (120 km)

The Cave of Rei do Mato, in Sete Lagoas, is a fascinating underground complex that reveals stalactites and stalagmites formed over millennia. In Cordisburgo, 120 km from Belo Horizonte, visit the Cave of Maquiné, a geological treasure known as the "Catedral do Sertão", where 19th Century naturalists found important paleontological remains. Both caves offer the visitors a unique journey into the subterranean wonders.

GENERAL SUMMARY AND INDICATIONS OF WEDNESDAY'S ITINERARIES

Nº	NAME OF THE ITINERARY	DIST. DE BH	TYPE OF WALKING	RECOMMENDED EQUIPMENT	DURATION	TRANSPORT	SPOTS
WT-01	City tour in Belo Horizonte	xxx	Walking in a paved and flat urban area	Sunscreen and hat	4 hours	Bus	40
WT-02	Cultural Complex of Liberty Square in BH	xxx	Walking in a paved and flat urban area	Sunscreen and hat	4 hours	Bus	40
WT-03	Architectural Complex of Pampulha and the Mineirão Stadium	xxx	Walking in a paved and flat urban area	Sunscreen and hat	4 hours	Bus	40
WT-04	Park of Mangabeiras and Trip to the Outlying Rola Moça Mountain Range in BH	xxx	Hiking on trails, gentle inclines	Sunscreen and hat, and hiking shoes	6 hours	Bus	2x40



Nº	NAME OF THE ITINERARY	DIST. DE BH	TYPE OF WALKING	RECOMMENDED EQUIPMENT	DURATION	TRANSPORT	SPOTS
WT-05	Caves in the Ferruginous Rock of the Quadrilátero Ferrífero	40 km	Trail walking, moderate inclines, light climbing	Hiking shoes, lighted helmet and gaiters	8 hours	Micro bus	15
WT-06	Sumidouro Lagoon and Lapinha Cave Show Cave in Lagoa Santa	40 km	Walk on park trails, with stairs and walkways. Cave of Lapinha is a show cave	Hiking shoes, sunscreen, and hat. To visit the cave, the park offers helmets.	8 hours	Bus	2x40
WT-07	Cerca Grande Archeological Site in Matozinhos	60 km	Little bumpy walk along an open trail in the forest.	Hiking shoes, sunscreen, insect repellent, hat or helmet.	6 hours	Bus	34
WT-08	Inhotim - the Largest Open-Air Museum in the World in Brumadinho	60 km	Walking in a paved and flat urban area	Sunscreen and hat	8 hours	Bus	2x40
WT-09	Aleijadinho Sculptural Complex in Congonhas	80 km	Walking in paved and hilly urban areas (hills and slopes)	Sunscreen and hat. Do not wear flip-flops or high-heeled shoes	6 hours	Bus	40
WT-10	Cave of Igrejinha and Ouro Branco Mountain Range	90 km	Hike the park's rugged trails. Cave of Igrejinha is a cave not adapted for tourism	Hiking shoes, sunscreen, insect repellent, individual lighting, helmet, and leggings	8 hours	Micro bus	15
WT-11	The Colonial Baroque in Ouro Preto	100 km	Walking in a paved and hilly urban area (steep slopes and slopes)	Sunscreen and hat. Do not wear flip-flops or high-heeled shoes	8 hours	Bus	40
WT-12	Gold Mines and Museums in Ouro Preto	100 km	Walking in a paved and hilly urban area (steep slopes and slopes)	Closed shoes without high heels and helmets are provided by the mine. Individual lighting is useful	8 hours	Bus	40
WT-13	Serra do Cipó National Park in Santana do Riacho	100 km	Walking trails, gentle slopes, possibility of bathing (cold water)	Hiking shoes, sunscreen, hat, and repellent	8 hours	Bus	34
WT-14	Kiwa Cave, Itacolomi State Park	100 km	Hiking trails, high inclines, light climbing	Hiking shoes, sunscreen, hat, repellent and headlight + helmet	8 hours	Micro bus	15
WT-15	Gogô Archeological Site and the Gold Mine of Passagem in Mariana	120 km	Hiking trails, high incline, ticks	Hiking shoes, sunscreen, hat, repellent and headlight + helmet	8 hours	Micro bus	15
WT-16	Show Caves of Rei do Mato in Sete Lagoas and of Maquiné in Cordisburgo	120 km	Walk on park trails, with stairs and walkways. Both caves are adapted for tourism	Hiking shoes, sunscreen, and hat. To visit the caves, the park offers helmets.	8 hours	Bus	2x40



14 PRE- AND POST-CONGRESS TRIPS

Brazil, with its huge territory - the fifth largest land area on the planet -, with 27 states in addition to the Federal District (DF), and six diverse biomes, still shows itself to be a country to be revealed from a speleological point of view, considering that the caves are directly associated with the most diverse lithologies and, Brazil, being a country known worldwide for its diversity and availability of mineral resources.

It was in Minas Gerais, in the interior of the South American Continent, that American speleology was born through the visionary will of students from the Escola de Minas de Ouro Preto, with the Sociedade Excursionista e Espeleológica (SEE) in 1937; However, the systematic study of caves in the country, in all its technical, scientific, cultural, economic and social aspects, began significantly only after the 1980s, when large cave systems were discovered in the most varied lithologies, surveyed, and studied. Today, around 23 thousand cavities are cataloged throughout the Brazilian territory, distributed in all its

biomes and units of the Federation.

Considering the territorial extension of Brazil, its regional characteristics, the different ecosystems and, mainly, the possible interests of interested participant, 25 different itineraries were structured for pre- and/or post-congress programs, which are spread across 14 states. Except for three routes that are relatively close to Belo Horizonte, the venue of the Congress, all others are at distances that will require air transport.

To facilitate logistics for congress participants when booking domestic flights in Brazil, from the final point of each pre-congress program to Belo Horizonte, or from Belo Horizonte to the beginning of each post-congress program, the 19th ICS Organizing Committee established an agreement with a tourism agency. This agency is instructed to offer each congress attendee the ideal flight for each of the pre- or post-congress connections, simply by indicating the number of the chosen program.

PRE- AND POST-CONGRESS TRIPS



1

Canyons of Aparados da Serra and Caves Excavated by Extinct Megafauna (SC and RS)

2

Tourism Management of the Caves in the Southern Brazil (SC, PR, and SP)

3

Sandstones of the Ponta Grossa Region (PR)

4

Speleological Tourism in the Ribeira Valley (SP)

5

Caves Through in the Ribeira Valley (SP)

6

Retracing the 19th Century Cave Explorations of Danish Peter W. Lund (MG)

7

Show Caves and Historic Cities of Minas Gerais (MG)

8

Caves in Quartzite in the Ibitipoca Mountain Range (MG)

9

Speleology and Archeology in the Peruvaçu Valley (MG)

10

Springs of the Rio Vermelho Environmental Protection Area (GO)

11

Terra Ronca Complex and Caves of Goiás (GO)

12

Long Caves Through in São Domingos (GO)



13

Bodoquena
Mountain Range
and the Pantanal
(MS)

14

Cave Diving
in Bonito and
Trip to Pantanal
(MS)

15

Sandstone Caves
in the Chapada
dos Guimarães
Region (MT)

16

Caves and
Geodiversity in the
South of Chapada
Diamantina (BA)

17

Caves and Karst
of the Chapada
Diamantina (BA)

18

Cave Diving in the
Chapada
Diamantina (BA)

19

The Longest Caves of
Central-North
of Bahia (BA)

20

Serra da Capivara
National Park (PI)

21

Chapada de Ibiapaba,
Sete Cidades, and the
Beaches of Jericoacoara
(CE and PI)

22

The Amazon Forest
and the Caves in
Ferruginous Rocks
in Carajás (PA)

23

Sandstone Caves,
Igapós, and Igarapés of
Amazonas (AM)

24

From a Sea to the
Semi-Desert of
the Sertão (RN)

25

Geospeleology of the
São Desidério Karst
(BA)

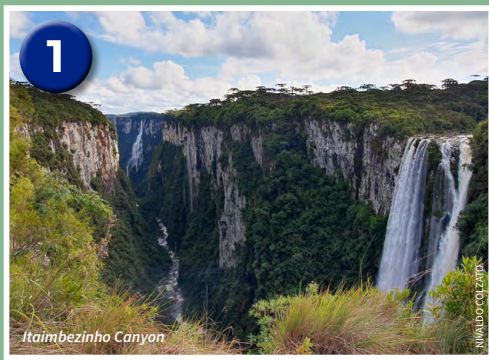


PHOTO BY CLAYTON LINO

São Desidério karst.



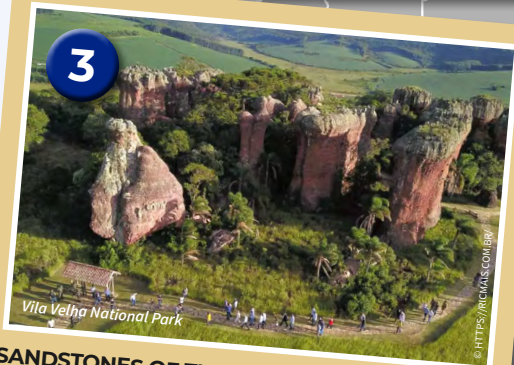
PRE- AND POST-CONGRESS TRIPS



**CANYONS OF APARADOS DA SERRA and
CAVES EXCAVATED BY EXTINCT MEGAFAUNA**
Rio Grande do Sul (RS) and Santa Catarina (SC)



**TOURISM MANAGEMENT OF THE
CAVES IN THE SOUTHERN BRAZIL**
Santa Catarina (SC), Paraná (PR), and São Paulo (SP)



SANDSTONES OF THE PONTA GROSSA REGION
Paraná (PR)



**SPELEOLOGICAL TOURISM IN
THE RIBEIRA VALLEY**
São Paulo (SP)



CAVES THROUGH IN THE RIBEIRA VALLEY
São Paulo (SP)



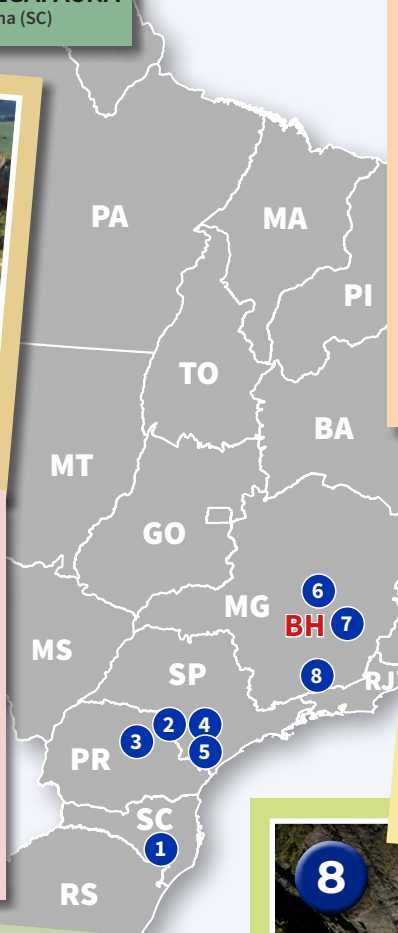
**RETRACING THE 19th CENTURY CAVE
EXPLORATIONS OF DANISH PETER W. LUND**
Minas Gerais (MG)



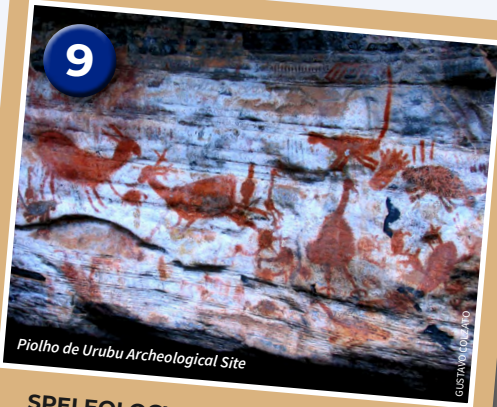
**SHOW CAVES AND
HISTORIC CITIES OF MINAS GERAIS**
Minas Gerais (MG)



**CAVES IN QUARTZITE IN THE
IBITIPOCA MOUNTAIN RANGE**
Minas Gerais (MG)



PRE- AND POST-CONGRESS TRIPS



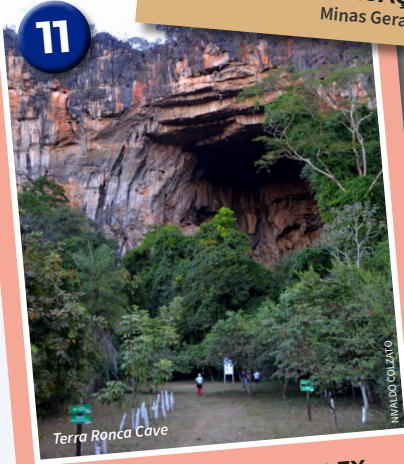
9
PIOLHO DE URUBU ARCHEOLOGICAL SITE
Minas Gerais (MG)



10

Jaú Cave

SPRINGS OF THE RIO VERMELHO ENVIRONMENTAL PROTECTION AREA
Goiás (GO)



11

Terra Ronca Cave

TERRA RONCA COMPLEX AND CAVES OF GOIÁS
Goiás (GO)



12

São Matheus Cave

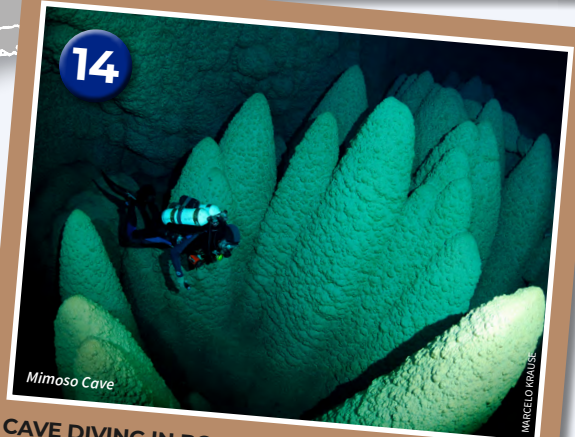
LONG CAVES THROUGH IN SÃO DOMINGOS
Goiás (GO)



13

Sucuri River

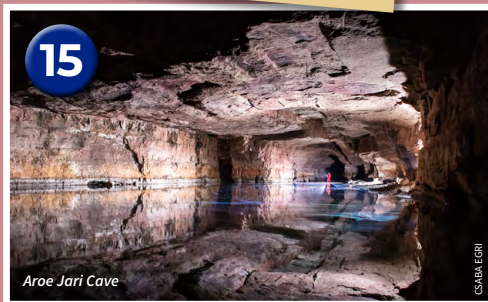
BODOQUENA MOUNTAIN RANGE AND THE PANTANAL
Mato Grosso do Sul (MS)



14

Mimoso Cave

CAVE DIVING IN BONITO AND TRIP TO PANTANAL
Mato Grosso do Sul (MS)



15

Aroe Jari Cave

SANDSTONE CAVES IN THE CHAPADA DOS GUIMARÃES REGION
Mato Grosso (MT)



16

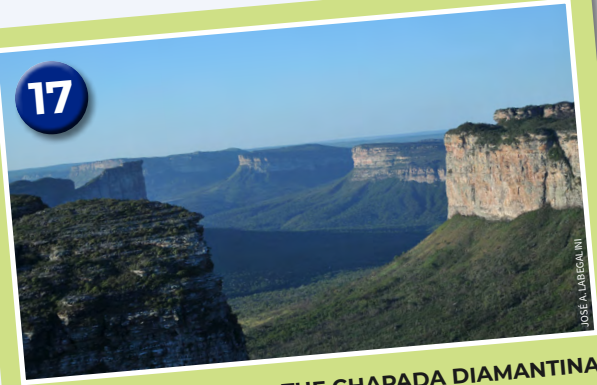
Cave of Mangabeira

CAVES AND GEODIVERSITY IN THE SOUTH OF CHAPADA DIAMANTINA
Bahia (BA)



PRE- AND POST-CONGRESS TRIPS

17



CAVES AND KARST OF THE CHAPADA DIAMANTINA
Bahia (BA)

18



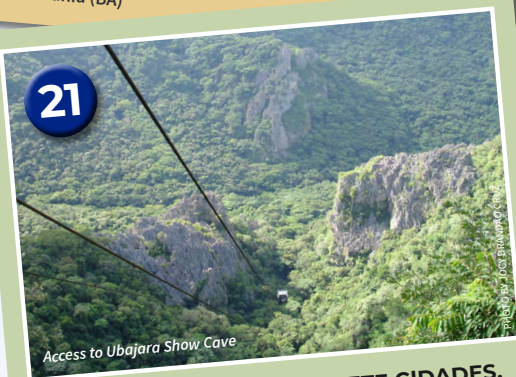
CAVE DIVING IN THE CHAPADA DIAMANTINA
Bahia (BA)

19



THE LONGEST CAVES OF CENTRAL-NORTH OF BAHIA
Bahia (BA)

21



CHAPADA DE IBIAPABA, SETE CIDADES, AND THE BEACHES OF JERICOACOARA
Ceará (CE) and Piauí (PI)

20



SERRA DA CAPIVARA NATIONAL PARK
Piauí (PI)

22



THE AMAZON FOREST AND THE CAVES IN FERRUGINOUS ROCKS IN CARAJÁS
Pará (PA)

23



SANDSTONE CAVES, IGAPÓS AND IGARAPÉS OF THE AMAZON
Amazonas (AM)

25



GEOSPELEOLOGY OF THE SÃO DESIDÉRIO KARST
Bahia (BA)

24



FROM A SEA TO THE SEMI-DESERT OF THE SERTÃO
Rio Grande do Norte (RN)

PA

22

MA

CE

21

24

RN

PI

20

19

BA

25

17

18

MT

GO

MG

BH

SP

PR

SC

RS



CANYONS OF APARADOS DA SERRA AND CAVES EXCAVATED BY EXTINCT MEGAFUNA (SC and RS)

The Aparados da Serra Canyons are located on the border between the states of Santa Catarina (SC) and Rio Grande do Sul (RS), on the edge of the Serra Geral geological formation. These canyons are carved into the cliffs of the volcanic plateau of the Paraná Basin. The Aparados da Serra and Serra Geral National Parks feature several impressive canyons, including the Itaimbezinho, with walls up to 720 meters high, and the Fortaleza, with elevation differences reaching 900 meters, straddling the border between Rio Grande do Sul and Santa Catarina. The Brazilian Paleotocas, primarily found in the southern states (RS, SC, and SP), were excavated by mammals of the extinct megafauna in friable material. The unique geography of the region, with its significant variations in ecosystems and climates, offers valuable insights into the regional paleoclimate.



Itaimbezinho Canyon



Rio do Rastro Mountain Range



COORDINATOR

Thomas Arthur Hecke

Email: thomasarturhecke@gmail.com

Phone/WhatsApp: +55 41 99906 4090

DATES

Post-Congress - POST-01

Starts July 28, 2025 at 1:00 PM, at Porto Alegre Airport (POA)

Ends August 3, 2025 at 12:00 PM, in Florianópolis (SC)

NUMBER OF PARTICIPANTS

Minimum: 07 | Maximum: 12

TYPE OF TRANSPORTATION

Van for intercity trips and visits

Airports used

- Belo Horizonte – CNF
- Porto Alegre – POA
- Florianópolis – FLN

PREREQUISITES

Participants must be in good health and physically fit for long, strenuous hikes, which include multiple river crossings and cover up to 14 km per day. Trails traverse open fields or deep canyon terrains, with temperatures ranging from -3°C to 25°C (27°F to 77°F) during this time of the year.

EQUIPMENT FOR INDIVIDUAL USE

Participants are advised to wear hiking boots, long pants, a long-sleeved UV-protective shirt, and a helmet. Depending on the weather, additional recommended items include a windbreaker, gloves, a hat or cap, a raincoat, and clothing suitable for cold and humid conditions.

INCLUDED IN THE PACKAGE

- Transport by van and/or car for airport-visits-airport transfers
- Tickets to attractions
- 7 overnight stays with breakfast
- Meals: lunch, trail snacks, and dinner provided daily

NEED

Participants must be at least 16 years old and accompanied by a parent or legal guardian.

WEBSITES

- [Parque Nacional de Aparados da Serra](#)
- [Guia do visitante](#)
- [Cânions de Itaimbezinho e Fortaleza](#)
- [Turismo em Urubici](#)
- [Paleotocas de Três Barras](#)

TOURISM MANAGEMENT OF THE CAVES IN THE SOUTHERN BRAZIL (SC, PR, and SP)

This region, immersed in the Brazilian Atlantic Forest, is privileged to host more than 300 registered caves, though not all are open to tourist visits. Among those accessible to the public, some were pioneers in the development of management plans, serving as a basis and inspiration for planning in other regions of the country. This rich speleological heritage provides opportunities for generating employment and income for surrounding communities and attracts a significant number of visitors. The diversity of speleological tourism in the region encompasses various forms of tourism, including mass tourism (e.g., Devil's Cave and Botuverá Cave), ecotourism (e.g., Santana Cave and Bacaetava Cave), and adventure tourism (e.g., Água Suja and Morro Preto Caves). Additionally, the region offers tourism in parks, picturesque mountainous landscapes, and areas with high biodiversity.

PREREQUISITES

Participants must be in good health and physically conditioned for light to moderate walks of up to 2 km. Trails are typically open in the forest, with temperatures ranging from -3°C (at dawn) to 25°C (27°F to 77°F) at this time of year.

EQUIPMENT FOR INDIVIDUAL USE

Participants are advised to wear hiking boots, long pants, a long-sleeved UV-protective shirt, and a hat or cap for hiking. A helmet with lighting is necessary for cave exploration (some parks provide helmets and backup lights). It is recommended to use a backpack for trails and synthetic fabric clothing for quick drying, suitable for water temperatures from 15°C to 17°C (50°F to 63°F).

INCLUDED IN THE PACKAGE

- Transportation by van for airport-visits-airport transfers
- Tickets to attractions
- 6 overnight stays with breakfast
- Meals: lunch, trail snacks, and dinner provided daily

NEED

Participants must be at least 12 years old and accompanied by a parent or legal guardian.

COORDINATOR

Gisele Cristina Sessegolo

Email: gisele.sessegolo@gmail.com

Phone/WhatsApp: +55 41 99694 9526

DATES

Pre-Congress - PRE-02

Starts July 13, 2025 at 4:00 PM, at Florianópolis Airport (SC)

Ends July 19, 2025 at 8:00 AM at the hotel in Curitiba (PR)

Post-Congress - POST-02

Starts July 28, 2025 at 4:00 PM, at Florianópolis Airport (SC)

Ends August 3, 2025 at 8:00 AM at the hotel in Curitiba (PR)

NUMBER OF PARTICIPANTS

Minimum: 12 | Maximum: 16

TYPE OF TRANSPORTATION

Van for intercity travel and sightseeing

Airports used

- Belo Horizonte – CNF
- Curitiba – CWB
- Florianópolis – FLN

WEBSITES

- [Parque Municipal das Grutas de Botuverá](#)
- [Parque Natural Municipal das Grutas de Bacaetava](#)
- [Parque Estadual de Campinhos](#)
- [Caverna do Diabo](#)
- [PETAR](#)



Bacaetava Cave.

PHOTO BY KRAW PENAS

SANDSTONES OF THE PONTA GROSSA REGION (PR)

The sandstone formations in the Ponta Grossa region resulted from the deposition of a large volume of sand on the seabed approximately 400 to 300 million years ago, during the Devonian and Carboniferous periods. The drainage of this inland sea and the uplifting of its bed by tectonic forces exposed the sand deposits, which were then cemented, in some situations, with iron oxide, giving the sandstone its characteristic reddish color. The combined action of tectonic activities, rainfall erosion (both surface and underground), and wind sculpted the landscape, creating a variety of specific geomorphological features such as sinkholes (locally known as "furnas"), canyons, stone towers, lakes, and unique rock formations. The region is known for its unique biodiversity and modern, sustainable infrastructure. The landscape of the Ponta Grossa region includes fields, forests, and remnants of the cerrado. This area also offers a rich blend of archaeology and culture, highlighting the historical diversity of the Campos Gerais region of Paraná.

PREREQUISITES

Participants must be in good health and physically fit for light walks of up to 8 km per day on trails through open field areas or forest thickets. Temperatures during this time of year can vary from -3°C to 25°C (27°F to 77°F).

EQUIPMENT FOR INDIVIDUAL USE

Participants are advised to wear sneakers or hiking boots, long pants, a long-sleeved UV-protective shirt, and a hat or cap. Insect repellent is also recommended. Depending on the weather, additional recommended items include a windbreaker, gloves, and a raincoat.

INCLUDED IN THE PACKAGE

- Transport by van and/or car airport-visits-airport transfers
- Tickets to attractions
- 5 overnight stays with breakfast
- Meals: lunch, trail snacks and dinner provided daily

NEED

Participants must be at least 12 years old and accompanied by a parent or legal guardian.

COORDINATOR

Karin Linete Hornes

Email: klhornes@uepg.br

Phone/WhatsApp: 45 99963 7743

DATES

Pre-Congress - PRE-03

Starts July 14, 2025 at 1:00 PM, at Curitiba Airport (PR)

Ends July 19, 2025 at 12:00 PM, at Curitiba Airport (PR)

Post-Congress - POST-03

Starts July 28, 2025 at 1:00 PM, at Curitiba Airport (PR)

Ends August 2, 2025 at 8:00 AM at the hotel in Ponta Grossa (PR)

NUMBER OF PARTICIPANTS

Minimum: 10 | Maximum: 15

TYPE OF TRANSPORTATION

Van for all trips and visits

Airports used

- Belo Horizonte – CNF
- Curitiba – CWB

WEBSITES

- [Parque Estadual de Vila Velha](#)
- [Estrias Glaciares de Witmarsun](#)
- [Buraco do Padre](#)
- [Gartelá](#)
- [Moinho Castrolanda](#)
- [Refúgio das Curucacas](#)
- [Museu de Ciências Naturais](#)



SPELEOLOGICAL TOURISM IN THE RIBEIRA VALLEY (SP)

The underground realm harbors some of the last untouched spaces on our planet. For this reason, among others, caves require careful use, respect, and protection. In the heart of the Brazilian Atlantic Forest, the Vale do Ribeira region undertakes efforts aimed at minimizing the impacts of tourist visits and effectively protecting the numerous caves where activities are permitted. This is an ongoing process, continually monitored to ensure a comprehensive understanding of all aspects of speleotourism, thereby enabling the creation of diverse opportunities tailored to different visitor profiles. The caves in this region offer a wide spectrum of speleotourism experiences. From mass tourism at Devil's Cave to ecotourism at Santana Cave and adventure tourism at Água Suja Cave, visitors can explore the underground world in various ways. Additionally, there are caves suitable for calculated-risk tourism, such as Casa de Pedra, which holds significance in the history of the Brazilian Speleological Society.

Note: This itinerary does not include calculated risk tourism activities.



Água Suja Cave.

PREREQUISITES

Participants should be in good health and physically fit for light, medium, and heavy day hikes, with some trails extending up to 12 km. Trails typically traverse forested areas, with temperatures ranging from -3°C to 25°C (27°F to 77°F) during this time of year.

EQUIPMENT FOR INDIVIDUAL USE

It is recommended to wear hiking boots, long pants, a long-sleeved UV-protective shirt, a hat or cap for hiking, and a helmet with lighting for cave exploration (helmets are available for rent at the park). Participants should also bring a backpack for trails and clothing made of synthetic fabric for quick drying, suitable for water temperatures ranging from 15 to 17°C (50 to 63°F).

INCLUDED IN THE PACKAGE

- Transportation by van airport-visits-airport transfers
- Tickets to attractions

COORDINATOR

José Antonio Basso Scaleante (Scala)

Email: scala@estacaofloresta.com.br

Phone/WhatsApp: +55 19 99216 9544



DATES

Pre-Congress - PRE-04

Starts July 13, 2025 at 10:00 AM, at Campinas Airport (SP)

Ends July 19, 2025 at 1:00 PM, at Campinas Airport (SP)

Post-Congress - POST-04

Starts July 28, 2025 at 10:00 AM, at Campinas Airport (SP)

End August 3, 2025 at 1:00 PM, at Campinas Airport (SP)

NUMBER OF PARTICIPANTS

Minimum: 06 | Maximum: 12

TYPE OF TRANSPORTATION

Van moving from the airport, to parks and the region
Airports used

- Belo Horizonte – CNF
- Campinas – VCP

- 6 overnight stays with breakfast
- Meals: lunch, trail snacks and dinner provided daily

NEED

Participants must be at least 12 years old and accompanied by a parent or legal guardian.

WEBSITES

- [Petar Online](#)
- [Parque Estadual Caverna do Diabo](#)



Devil's Cave.

PHOTO BY AYRTON LABEGALINI

CAVES THROUGH IN THE RIBEIRA VALLEY (SP)

The practice of caving in Vale do Ribeira has a rich history, beginning with the efforts of German paleontologist Richard Krone in 1896, who explored new caves and documented them. Later, in the 1950s, French speleologists arrived in the region to conduct topographical surveys and further explorations. This period served as a cornerstone for the development of vertical caving techniques and diving practices in Brazil. Covered by the largest expanse of preserved Atlantic Forest and characterized by high rainfall and mountainous terrain, Vale do Ribeira boasts numerous caves with perennial and powerful watercourses. These waterways have served as guiding features for many explorations in the region. Explorations often followed underground rivers, initiated from resurgences or sinkholes along their respective courses. Some caves were easily traversed, while others posed greater challenges, requiring extensive employment of vertical caving techniques. In this itinerary, participants can expect to traverse several notable caves or cave systems, including Couto-Morro Preto (relatively easy), Devil's Cave (demanding), Casa de Pedra (the largest cave entrance in the world today - 215 meters high), Água Suja (featuring a single 98 meter freefall abyss with a picturesque walk along an underground river), and Ouro Grosso (250 meter drop in elevation, with a sequence of abysses and waterfalls).

PREREQUISITES

Participants should be in good health and physically conditioned for light, medium, and heavy walks, with some trails extending up to 12 km. Additionally, swimming ability is required for short sections within some caves. Trails typically traverse hilly areas in forested environments, with external temperatures ranging from 0°C to 25°C (32°F to 77°F) during this time of year.

EQUIPMENT FOR INDIVIDUAL USE

Participants must have complete equipment for vertical caving, including a helmet with lighting. Additionally, it is recommended to wear a hat or cap for hiking, use a backpack for trails, and wear clothing made of synthetic fabric for quick drying in water temperatures ranging from 15°C to 17°C (50°F to 63°F).

INCLUDED IN THE PACKAGE

- Transportation by van airport-visits-airport transfers
- Tickets to attractions
- 6 overnight stays with breakfast
- Meals: lunch, trail snacks and dinner provided daily

NEED

Participants must be at least 18 years old.

WEBSITES

- [Petar Online](#)
- [Parque Estadual Caverna do Diabo](#)
- [Turismo de Natureza](#)



COORDINATOR

Diego Ferreira

E-mail: grupaerius@gmail.com

Phone/WhatsApp: +55 19 99193 4202

DATES

Pre-Congress - PRE-05

Starts July 13, 2025 at 10:00 AM, at Campinas Airport (SP)

Ends July 19, 2025 at 1:00 PM, at Campinas Airport (SP)

Post-Congress - POST-05

Starts July 28, 2025 at 10:00 AM, at Campinas Airport (SP)

End August 3, 2025 at 1:00 PM, at Campinas Airport (SP)

NUMBER OF PARTICIPANTS

Minimum: 06 | Maximum: 12

TYPE OF TRANSPORTATION

Van moving from the airport, to parks and the region
Airports used

- Belo Horizonte – CNF
- Campinas – VCP



Casa de Pedra Cave.

PHOTO BY DANIEL MENIN

RETRACING THE 19th CENTURY CAVE EXPLORATIONS OF DANISH PETER W. LUND (MG)

Peter Wilhelm Lund (1801-1880), a Danish naturalist, is widely regarded as the pioneer of speleology in the state of Minas Gerais and is hailed as the father of Brazilian paleontology. His explorations spanned a vast route in one of Brazil's key karst regions: the Formation of Bambuí carbonates within the Rio das Velhas Hydrographic Basin. Lund meticulously documented approximately 20 caves with detailed descriptions, maps, and drawings during his expeditions. Following Lund's death, only a few caves were rediscovered through subsequent research efforts, until recent years when ten previously lost caves were successfully redescribed. In this itinerary, fellow cavers, including family members with minimal experience, have the opportunity to explore the main caves where Lund discovered numerous fossils, including those of giant sloths, saber-toothed tigers, and even human remains. Beyond the caves and the lush karst landscape, visitors can immerse themselves in the authentic cuisine of Minas Gerais, experience local traditions, and explore the Brazilian cerrado, a unique type of savannah immortalized by one of Brazil's greatest writers, João de Guimarães Rosa. This itinerary offers a rich tapestry of caves, history, tradition, and culture, all in one unforgettable journey.

PHOTO BY NIVALDO COLIZATO



Cerca Grande Massif.

PREREQUISITES

Participants should be in good health and physically capable for light walks, covering trails of up to 2 km per day. The areas outside the caves may experience high temperatures (reaching 30°C or 86°F) and dry conditions during this season.

EQUIPMENT FOR INDIVIDUAL USE

Participants should come prepared with closed-toe trail shoes, helmet with lighting, long-sleeved blouse and pants for sun and insect protection. Please note that long pants and leggings will not be provided at any of the locations visited, but equipment rental may be arranged with prior appointment. Additionally, it is recommended to bring hiking backpack, sunscreen, insect repellent, and a cap.

INCLUDED IN THE PACKAGE

- Transportation by van or minibus
- Tickets to attractions
- 3 overnight accommodation with breakfast
- Meal: lunch, trail snacks and dinner provided daily

COORDINATOR

Luciano Emerich Faria

Email: luemfa@hotmail.com

Phone/WhatsApp: +55 31 99773-5985



DATES

Pre-Congress - PRE-06

Starts July 16, 2025 in Belo Horizonte (MG)

– place and time to be defined

Ends July 19, 2025 in Belo Horizonte (MG)

Post-Congress - POST-06

Starts July 28, 2025 in Belo Horizonte (MG)

Ends August 31, 2025 in Belo Horizonte (MG)

NUMBER OF PARTICIPANTS

Minimum: 12 | Maximum: 20

TYPE OF TRANSPORTATION

Minibus or van traveling from the location where the event will take place, from the Museum Minas and Metals or participant hotels.

NEED

Participants must be at least 12 years old and accompanied by a parent or legal guardian.

WEBSITES

- [Gruta Maquiné](#)
- [Rota Lund](#)
- [Lapa Quatro Bocas](#)
- [Lapa do Mosquito](#)
- [Lapas de Peter Lund](#)
- [Lapa da Forquilha](#)
- [Parque Estadual do Sumidouro](#)
- [Parque Estadual de Cerca Grande](#)



Cerca Grande.

PHOTO BY JOCY BRANDÃO

SHOW CAVES AND HISTORIC CITIES OF MINAS GERAIS (MG)

The cities of Minas Gerais are rich in culture, history, and natural beauty. Tourism throughout the state is diverse, offering unique experiences in every region. The vast expanse of Minas Gerais boasts a variety of geological formations, with natural diversity shaping its history from the earliest inhabitants of pre-Brazilian history, who occupied the caves of the karst region of Lagoa Santa, to the bandeirantes from São Paulo in search of mineral wealth. The systematic occupation of the state began in the 17th century, resulting in beautifully preserved historic cities that showcase this heritage. The Historic Cities route includes Caeté, Diamantina, Mariana, and Ouro Preto, with the latter two featuring deactivated gold mines open for underground tourism. Additionally, the itinerary includes visits to the Tourist Caves that are part of the Lund Route, namely: Rei do Mato Cave, Lapinha Cave, and Maquiné Cave.

PREREQUISITES

Participants should be in good health and physically capable of light walks, covering trails up to 2 km per day. The areas outside the caves can experience high temperatures (up to 30°C or 86°F) and very dry conditions during this season.

EQUIPMENT FOR INDIVIDUAL USE

Participants should come prepared with closed-toe trail shoes, helmet with headlamp, long-sleeved blouse and long pants for sun and insect protection. Please note that long pants and leggings will not be provided at any of the locations visited, but equipment rental can be arranged with prior notice. Additionally, it is recommended to bring hiking backpack, sunscreen, insect repellent, and a cap.

INCLUDED IN THE PACKAGE

- Transportation by van or minibus
- Tickets to attractions
- 6 overnight stays with breakfast
- Meals: lunch, trail snacks and dinner provided daily

NEED

Participants must be at least 12 years old and accompanied by a parent or legal guardian.

WEBSITES

- [Rota Lund](#)
- [Diamantina](#)
- [Parque Estadual Biribiri](#)
- [Serra do Espinhaço](#)
- [Serra da Piedade](#)
- [Santuário do Caraça](#)
- [Minas de Passagem de Mariana](#)
- [Lapa de Antônio Pereira](#)
- [Ouro Preto](#)
- [Museu da Escola de Minas](#)

COORDINATOR

Mariana Barbosa Timo

Email: mariana.timo@gmail.com

Phone/WhatsApp: +55 31 99195 0381

DATES

Pre-Congress - PRE-07

Starts July 13, 2025 in Belo Horizonte (MG)

– place and time to be defined

Ends July 19, 2025 in Belo Horizonte (MG)

NUMBER OF PARTICIPANTS

Minimum: 12 | Maximum: 20

TYPE OF TRANSPORTATION

Minibus or van traveling from the location where the event will take place.



City of Ouro Preto.



Rei do Mato Cave.

CAVES IN QUARTZITE IN THE IBITIPOCA MOUNTAIN RANGE (MG)

Ibitipoca State Park boasts stunning scenic beauty, largely due to the karstification process in quartzites. This process has resulted in more than 60 registered caves, approximately 70% of which have been mapped, forming the largest and most significant quartzite karst area in Brazil. Among the most important caves in the park are the Martimiano II Cave, which spans 4,170 meters in horizontal projection and is the largest Brazilian cave composed of quartzite / siliclastic rocks, and the Bromélias Cave, which, at 3,447 meters long, was considered the largest quartzite cave in the world in the 1990s. The park's natural cavities share similar characteristics with caves found in Venezuela, South Africa, and Australia. Besides the caves, the park features other karst formations such as semicircular collapse sinkholes, some of which provide underground access, as well as cliffs and waterfalls. The park is home to a significant number of endemic plant species, with a notable variety of lichens, orchids, and bromeliads easily observed along the walking trails and near cave entrances. The fauna in Ibitipoca State Park includes a wide variety of bird species (over 350 observed), as well as mammals such as the Guará wolf (*Chrysocyon Brachyurus*) and primates, including the Sauá monkey (*Callicebus Nigrifrons*).

PHOTO BY GABRIEL LOURENÇO



Martimiano II Cave.

PREREQUISITES

Participants should be in good health and physically fit for medium and long walks, covering distances from 1 km to 7 km per day. The trails predominantly feature steep sections on quartzite outcrops. Routes inside the cavities include loose blocks and slippery sections. Average temperatures in July are around 16°C (61°F) with a chance of rain.

EQUIPMENT FOR INDIVIDUAL USE

Participants should come prepared with hiking or spelunking boots, helmet with primary and backup lighting, hiking backpack, gloves, hat or cap, sunscreen, long-sleeved shirt, and long pants. Additionally, it is recommended to bring caving overalls, sunglasses, PFF2 mask, and insect repellent.

COORDINATOR

Victor Martins

Email: martins.vitoroliveira@gmail.com

Phone/WhatsApp: +55 31 99924 3209

DATES

Post-Congress - POST-08

Starts July 28, 2025 in Belo Horizonte (MG)

Ends August 01, 2025 in Belo Horizonte (MG)

NUMBER OF PARTICIPANTS

Minimum: 10 | Maximum: 20

TYPE OF TRANSPORTATION

Van and cars when commuting from Belo Horizonte

Van and cars when traveling to local visits



Manequinho Cave.

PHOTO BY GABRIEL LOURENÇO

INCLUDED IN THE PACKAGE

- Transportation by van or minibus
- Tickets to attractions
- 4 overnight stays with breakfast
- Meals: lunch, trail snacks and dinner provided daily

NEED

Participants must be at least 16 years old and accompanied by a parent or legal guardian.

WEBSITES

- [Parque Estadual do Ibitipoca](#)
- [Ibitipoca Tour](#)



SPELEOLOGY AND ARCHEOLOGY IN THE PERUAÇU VALLEY (MG)

The São Francisco River runs from south to north through the largest speleological province in Brazil, the Bambuí Speleological Province. This province is characterized by a sedimentary layer of limestone rocks more than 200 meters thick, with a thin and practically sub-horizontal stratigraphy. These geological features have allowed the tributary networks of the São Francisco River to carve out vast, almost entirely horizontal caves with wide galleries. The Peruaçu River, located in the northern part of Minas Gerais, has created a series of caves along its course and its tributaries before discharging its waters on the left bank of the São Francisco River. In total, there are around 140 speleological sites in the area, many with signs of prehistoric human activity, making it one of the largest concentrations of archaeological sites in the world. It is also home to the Xacriabá indigenous tribe. This itinerary will include crossing five of the six caves situated along the Peruaçu River channel, in addition to visits to numerous other caves, shelters, and archaeological sites distributed along the 17 km of the main canyon.

PREREQUISITES

Participants must have health and fitness suitable for long walks, up to 10 km per day, on rugged trails with many descents and ascents, loose blocks and stones. High temperatures are expected in the sections outside the caves (up to 30°C or 86°F), and the winter season is quite dry.

EQUIPMENT FOR INDIVIDUAL USE

Participants should come prepared with closed footwear for the trail, helmet with headlamp, long pants and leggings (provided by the park). Additionally, it is recommended to bring hiking backpack, long-sleeved shirt (for protection against insects), sunscreen, insect repellent, and a hat.

INCLUDED IN THE PACKAGE

- Transport by van and/or car airport-visits-airport
- 6 overnight stays with breakfast
- Meals: lunch, trail snacks and dinner provided daily

NEED

Participants must be at least 16 years old and accompanied by a parent or legal guardian.

WEBSITES

- [Guia oficial do Governo Brasileiro para Visitação Parque Nacional Cavernas do Peruaçu](#)
- [Canyon do Peruaçu indicados a Patrimônio Mundial da Unesco](#)
- [Guia Completo do Parque Nacional Cavernas do Peruaçu](#)
- [Viagens Cinematográficas \(Turismo\)](#)
- [Parque Nacional Cavernas do Peruaçu](#)
- [Turismo em Januária](#)
- [Reportagem Rede Globo Televisão /Terra da Gente](#)
- [Reportagem Instituto Biotropicos](#)



COORDINATOR

Carlos Leonardo Giunco (Leo)

Email: leogiunco@gmail.com

Phone/WhatsApp: +55 38 99212 9111

DATES

Pre-Congress - PRE-09

Starts July 13, 2025, at 7:00 am, at Hotel Intercity, in Montes Claros (MG)

Ends July 19, 2025 at 1:00 PM, in Montes Claros (MG)

Post-Congress - POST-09

Starts July 27, 2025 at 6:00 PM, at Montes Claros Airport (MG)

Ends August 2, 2025 at 5:00 PM, in Montes Claros (MG)

NUMBER OF PARTICIPANTS

Minimum: 10 | Maximum: 16

TYPE OF TRANSPORTATION

Van and/or passenger cars traveling from the airport and in the region

Airports used

- Belo Horizonte – CNF
- Montes Claros – MOC



PHOTO BY ALEXANDRE LOBO

Cave of Janelão.

SPRINGS OF THE RIO VERMELHO ENVIRONMENTAL PROTECTION AREA (GO)

Created in 2001, the Springs of the Rio Vermelho Environmental Protection Area covers four municipalities in the northeast of Goiás - Buritinópolis, Damianópolis, Mambai, and Posse. Its main objective is to protect the region's exuberant speleological heritage. The establishment of this conservation unit had a significant impact on the planning and occupation one of the best-preserved regions of the cerrado biome in the country. Inserted in the "Tourist Region of Waters and Caves of Cerrado", these Environmental Protection Area has great tourism potential, offering history, waterfalls, and caves of singular beauty, even for the most experienced explorers. Notable caves include Lapa da Cachoeira do Funil and Tarimba Cave. This karst, formed mainly on the rocks of the Bambuí Groups, has little surface outcrop (with the exception of walls up to 80 meters high along the main rivers) but is well developed underground, presenting countless opportunities for new discoveries.

PHOTO BY RICARDO MARTINELLI



Jaú Cave.

PREREQUISITES

Participants should have health and physical conditioning for light walks, up to 2 km per day, on trails in open field areas or forest thickets. Expect high temperatures in the areas outside the caves (up to 40°C or 104°F).

EQUIPMENT FOR INDIVIDUAL USE

Participants should come prepared with helmet with headlamp and vertical gear (the park can provide these, but it is recommended that everyone brings their own), hiking boots, waterproof overalls, long-sleeved UV shirt, hat or cap. Additionally, it is recommended to bring hiking backpack, swimwear, gloves, spare shoes, sunscreen, and additional insect repellent.

INCLUDED IN THE PACKAGE

- Transport by van and/or car airport-visits-airport
- Tickets to attractions
- 5 overnight stays with breakfast
- Meals: lunch, trail snack and dinner provided daily

NEED

Participants must be at least 16 years old and accompanied by a parent or legal guardian.

WEBSITES

- [Mambai Adventure](#)
- [Ecoturismo em Mambai](#)

COORDINATOR

Bernardo Menegale

Email: bmbianchetti@gmail.com

Phone/WhatsApp: +55 61 9618 5909

DATES

Pre-Congress - PRE-10

Starts July 14, 2025 at Brasília Airport (DF)

Ends July 19, 2025 at Brasília Airport (DF)

Post-Congress - POST-10

Starts July 28, 2025 at Brasília Airport (DF)

End August 2, 2025 at Brasília Airport (DF)

NUMBER OF PARTICIPANTS

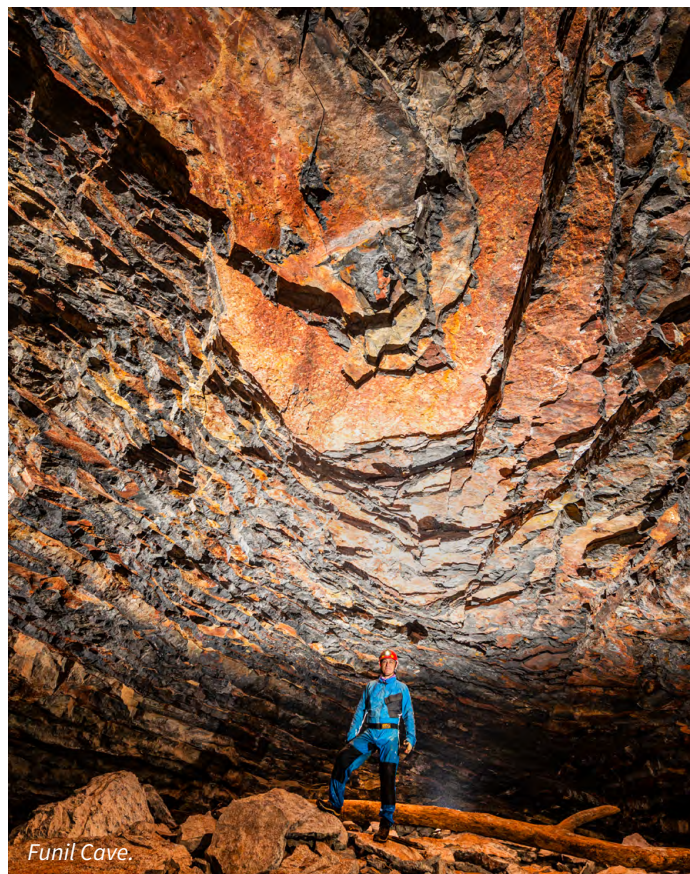
Minimum: 07 | Maximum: 14

TYPE OF TRANSPORTATION

Van and/or passenger cars traveling from the airport and in the region

Airports used

- Belo Horizonte – CNF
- Brasília – BSB



Funil Cave.

PHOTO BY RICARDO MARTINELLI

TERRA RONCA COMPLEX AND CAVES OF GOIÁS (GO)

The Serra do Calcário, also known as the rock massif that shelters the caves in this region of Goiás, preserves the rich native vegetation of Mata Seca, surrounded by dense arboreal savannah and extensive paths with buriti groves, showcasing the region's vast biodiversity within the Terra Ronca State Park. Originating from the east, the high-flow rivers traverse the Serra, forming extensive cave systems (fluviokarst) with galleries stretching tens of kilometers, teeming with cave fish, and acclaimed as some of Brazil's most stunning caves. Dominating the landscape are colossal limestone outcrops, in direct geological juxtaposition with crystalline basement rocks, exhibiting formations of sinkholes, canyons, and towering porticoes reaching tens of meters high. The diverse speleological systems share extensive galleries and a substantial volume of watercourses. Among these systems are the caves: Angélica-Bezerra (14,100 km), São Vicente (16,390 km), São Mateus-Imbira (22,600 km), Terra Ronca II-Malhada (7,500 km), and São Bernardo-Palmeiras (5,610 km). Undoubtedly, there are hundreds of other caves yet to be explored in this captivating speleological complex. Legally safeguarded by the Terra Ronca State Park, spanning an area of approximately 57,000 hectares, this fascinating landscape extends to the east, where the sources of the rivers coursing through the caves are situated within the Serra Geral of Goiás Environmental Protection Area - an imposing geomorphological formation characterized by sandstone walls.

PHOTO BY NIVALDO COLZATO



Terra Ronca Cave entrance.



COORDINATOR

Newton Castilho Lavoyer

Email: lavoyer@gmail.com

Phone/WhatsApp: +55 61 99333 8158

DATES

Pre-Congress - PRE-11

Starts July 15, 2025 at 10:00 AM, at Brasília Airport (DF)

Ends July 19, 2025 at 2:00 PM, at Brasília Airport (DF)

NUMBER OF PARTICIPANTS

Minimum: 10 | Maximum: 14

TYPE OF TRANSPORTATION

Van moving from the airport and in the region

Airports used

- Belo Horizonte – CNF
- Brasília – BSB

PREREQUISITES

Participants should have health and physical conditioning for long and strenuous walks, up to 5 km per day, on rugged trails with many descents and ascents, with loose blocks and stones, very technical cave crossings with lakes and waterfalls. External temperatures are high (30°C or 86°F) during a very dry season, and water temperature is approximately 23°C (75°F).

EQUIPMENT FOR INDIVIDUAL USE

Participants should come prepared with trekking shoes and overalls, helmet with headlamp (it is advisable to have an extra battery), spare flashlight, thermal blanket, small backpack, water canteen, and flotation device. Additionally, it is recommended to bring hiking backpack, long-sleeved shirt (protection against insects), sunscreen, insect repellent, and cap.

INCLUDED IN THE PACKAGE

- Transport by van and/or car airport-visits-airport
- Tickets to attractions
- 4 overnight stays with breakfast
- Meals: lunch, trail snacks and dinner provided daily

NEED

Participants must be at least 16 years old and accompanied by a parent or legal guardian.

WEBSITES

- [TransPortal](#)
- [Experiências Incríveis](#)
- [Parque Estadual de Terra Ronca](#)
- [Wikiparques](#)

LONG CAVES THROUGH IN SÃO DOMINGOS (GO)

In the 1970s, numerous expeditions began exploring the caves of Goiás, particularly in the municipality of São Domingos, where several rivers cross the limestone massif. Over decades of exploration, large caves were discovered, recorded, and surveyed. Several rivers in the region had their respective sinkholes identified in different caves, while other caves were recorded in many of the known resurgences. Once the continuity of several underground rivers was established, connections between sinkholes and their respective resurgences were sought. Today, five large cave systems comprise the crossings of São Domingos: Grutas Angélica-Bezerra (14,100 km), São Vicente (16,390 km), São Mateus (22,600 km), Terra Ronca-Malhada (7,500 km), and São Bernardo-Palmeiras (5,610 km). This itinerary will include some crossings, including São Vicente, which is undoubtedly the most technical and challenging of them all.



Terra Ronca II Cave.

PREREQUISITES

Participants should have health and physical conditioning for long and strenuous walks, up to 5 km per day, on rugged trails with many descents and ascents, loose blocks, and stones. The cave crossings are very technical, involving lake and waterfall crossings. Expect high external temperatures (30°C or 86°F) during a very dry season and water temperatures of 23°C (75°F).

EQUIPMENT FOR INDIVIDUAL USE

Participants should come prepared with footwear and overalls for caving, helmet with headlamp, complete kit for vertical caving, sleeping bag, attack backpack and water canteen. Additionally, it is recommended to bring hiking backpack, long-sleeved shirt (for protection against insects), sunscreen, insect repellent, cap, thermal insulation and tent (optional).

INCLUDED IN THE PACKAGE

- Transport by van and/or car airport-visits-airport
- Tickets to attractions
- 7 overnight stays with breakfast
- Meals: lunch, trail snacks, and dinner provided daily

COORDINATOR

Marcelo Peregrino

E-mail: operegrino@hotmail.com

Phone/WhatsApp: +55 62 99955 6331



DATES

Pre-Congress - PRE-1

Starts July 12, 2025 at 10:00 AM, at Brasília Airport (DF)

Ends July 19, 2025 at 3:00 PM, at Brasília Airport (DF)

Post-Congress - POST-12

Starts July 28, 2025 at 10:00 AM, at Brasília Airport (DF)

End August 4, 2025 at 3:00 PM, at Brasília Airport (DF)

NUMBER OF PARTICIPANTS

Minimum: 08 | Maximum: 10

TYPE OF TRANSPORTATION

Van moving from the airport and in the region
Airports used

- Belo Horizonte – CNF
- Brasília – BSB

NEED

Participants must be at least 18 years old.

WEBSITES

- [TransPortal](#)
- [Experiências Incríveis](#)



São Matheus Cave.

BODOQUENA MOUNTAIN RANGE AND THE PANTANAL (MS)

The Pantanal Basin is currently still undergoing subsidence and has a complex water system that contributes to it being one of the most important and fragile ecosystems in the world. The presence of carbonate rocks in the region has enabled the formation of numerous karst features, such as sinkholes, resurgences, and caves. The karst landscape develops on the carbonate rocks of the Corumbá Group, covering much of the mountainous relief of Serra da Bodoquena. This mountain, especially in the region of Bonito, where nature remains preserved thanks to exemplary ecotourism, boasts a multiplicity of natural ecosystems. For those who enjoy geology, this region offers a wealth of aspects to investigate, in addition to its unparalleled landscape. The genesis of all ecotourism in the region is the Gruta do Lago Azul, which contains a lake with a depth of over 50 meters and remarkable transparency. In summer, sunlight passes through the entrance portal and falls directly on the lake's surface, creating an optical spectacle that enhances its blue color. The Mato Grosso Pantanal, the largest wetland ecosystem in the world, is notable in the State of Mato Grosso do Sul for its richness and abundance of fish, birds, mammals, and reptiles.

PREREQUISITES

Participants should be in good health and physically conditioned for light walks, up to 8 km per day, along trails in open field areas or forest thickets, temperatures that can vary from 20°C to 40°C (68°F to 104°F) at this time of year.

EQUIPMENT FOR INDIVIDUAL USE

Participants should come prepared with hiking boots, long pants, a long-sleeved UV shirt, a hat or cap for hiking, and a helmet equipped with a headlamp for cave exploration. Additionally, it is recommended to bring a hiking backpack, a long-sleeved shirt for protection against insects, sunscreen, insect repellent, and a cap.

INCLUDED IN THE PACKAGE

- Transport by van and/or car airport-visits-airport
- Tickets to attractions
- 7 overnight stays with breakfast
- Meals: lunch, trail snacks, and dinner provided daily

NEED

Participants must be at least 12 years old, accompanied by a parent or legal guardian.

WEBSITES

- [Bonitotour](#)
- [Gruta do Lago Azul](#)
- [Abismo de Anhumas](#)
- [Gruta de São Miguel](#)
- [Rio Sucuri](#)
- [Rio da Prata](#)
- [Lagoa Misteriosa](#)
- [Fazenda Caiman](#)
- [Secretaria de Turismo de Bonito](#)
- [Gruta do Mimoso](#)

COORDINATOR

Livia Medeiros Cordeiro

Email: liv.biosubt@gmail.com

Phone/WhatsApp: +55 67 98200 6980



DATES

Pre-Congress - PRE-13

Starts July 12, 2025 at 10:00 AM, at Campo Grande Airport (MS)

Ends July 19, 2025 at 12:00 PM, at Campo Grande Airport (MS)

Post-Congress - POST-13

Starts July 28, 2025 at 10:00 AM, at Campo Grande Airport (MS)

End August 4, 2025 at 12:00 PM, at Campo Grande Airport (MS)

NUMBER OF PARTICIPANTS

Minimum: 04 | Maximum: 14

TYPE OF TRANSPORTATION

Van or bus traveling from the airport, to the parks and the region
Airports used

- Belo Horizonte – CNF
- Campo Grande – CGR



Rio da Prata

© [HTTPS://RIODAPRATA.ECO.BR/FOTOS/](https://riodaprata.eco.br/fotos/)



Lago Azul Cave

PHOTO BY JOSÉ AYRTON LABEGALINI

CAVE DIVING IN BONITO AND TRIP TO PANTANAL (MS)

ITINERARY CANCELED

The transparency of the waters in Bonito, combined with the abundance of flooded underground cavities that offer diving opportunities, makes it the ultimate speleodiving paradise in South America. Apart from enjoying the serene floating experience in the region's rivers and springs, adventurous divers can partake in technical diving expeditions in Gruta do Mimoso or embark on a thrilling journey into the Anhumas Abyss, where a 70 meter rappel leads to the observation of massive submerged cones. The natural beauty of the southern Pantanal region is truly remarkable, and it goes beyond the captivating geological features. The flora is incredibly diverse and vibrant, while visitors are treated to the sight of a rich and varied fauna. In Bonito's caves, there are options available for divers of all levels, ranging from advanced cave divers to those seeking their first baptism like experience.

EQUIPMENT FOR INDIVIDUAL USE

Participants should come prepared with hiking boots, long pants, long-sleeved UV shirt, hat or cap for hiking and a helmet with headlamp for the caves. Additionally, it is recommended to bring hiking backpack, long-sleeved shirt (protection against insects), sunscreen, insect repellent and cap.



COORDINATOR

Lívia Medeiros Cordeiro

Email: liv.biosubt@gmail.com

Phone/WhatsApp: +55 67 98200 6980



DATES

Pre-Congress - PRE-14

Starts July 12, 2025 at Bonito Airport (MS) or Campo Grande (MS)

Ends July 19, 2025 in Belo Horizonte (MG)

Post-Congress - POST-14

Starts July 28, 2025 in Belo Horizonte (MG)

End August 4, 2025 at Bonito Airport (MS) or Campo Grande (MS)

NUMBER OF PARTICIPANTS

Minimum: 03 | Maximum: 08

TYPE OF TRANSPORTATION

Air between Belo Horizonte – Bonito – Belo Horizonte

Van or bus traveling from the airport, to the parks and the region

Airports used

- Belo Horizonte – CNF
- Bonito – BYO or
- Campo Grande – CGR

INCLUDED IN THE PACKAGE

- Transport by van and/or car airport-visits-airport
- Tickets to attractions
- Diving equipment provided by the attractions
- 7 overnight stays with breakfast
- Meals: lunch, trail snacks, and dinner provided daily

NEED

Participants must be at least 18 years old.

Full Cave certification or equivalent is required for speleodiving activities.

WEBSITES

- [Bonitotour](#)
- [Gruta do Lago Azul](#)
- [Abismo de Anhumas](#)
- [Rio da Prata](#)
- [Lagoa Misteriosa](#)
- [Fazenda Caiman](#)
- [Secretaria de Turismo de Bonito](#)
- [Gruta do Mimoso](#)

SANDSTONE CAVES IN THE CHAPADA DOS GUIMARÃES REGION (MT)

The State of Mato Grosso, the third-largest state in Brazil, encompasses three significant Brazilian biomes - Amazon, Cerrado, and Pantanal - and boasts a spectacular diversity of geo-speleological features. The speleological route for the 19th International Congress of Speleology (ICS) in this state is developed across two regions. In the Municipality of Chapada dos Guimarães, located within a complex of Aroe Jari Caves in sandstone and quartzite regions, visitors can explore four caves: Aroe Jari (long considered the largest sandstone/quartzite cave in Brazil), Kiogo Brado, Pobo Jari, and Lagoa Azul. Additionally, they can enjoy a circuit of waterfalls with crystal-clear waters and viewpoints in the Chapada do Guimarães National Park, offering fantastic views of the Pantaneira plain. Moving to the Municipality of Nobres, situated in a carbonate region adjacent to the Gruta da Lagoa Azul State Park, visitors can explore several caves. The itinerary in this locale includes the exploration of three caves: Gruta da Lagoa Azul, Duto do Quebó, and Cerquinha. Visitors can also enjoy floats in the crystal-clear waters of the Salobra River, experiencing attractions such as the Enchanted Kingdom and/or Enchanted Aquarium.

PREREQUISITES

Participants must be in good health and physically fit for long walks, up to 12 km per day, on rugged trails with many descents and ascents, with loose blocks and stones, high temperatures in the sections outside the caves (38°C or 100.4°F) and in very dry season.

EQUIPMENT FOR INDIVIDUAL USE

Participants should come prepared with closed shoes for the trail, helmet with lighting, long pants, water bottle and leggings (provided at attractions). Additionally, it is recommended to bring hiking backpack, long-sleeved shirt (protection against insects), sunscreen, insect repellent and cap.

INCLUDED IN THE PACKAGE

- Transport by van and/or car airport-visits-airport
- Tickets to attractions
- 5 overnight stays with breakfast
- Meals: lunch, trail snacks and dinner provided daily

COORDINATOR

Julio Linhares

Email: juliolinhaires@geoebio.com.br

Phone/WhatsApp: +55 65 9.9984.5002

Natally Ap. Carvalho Neves

Email: natallyboeborora@gmail.com

Phone/WhatsApp: +55 65 9.9903.3444

DATES

Pre-Congress - PRE-15

Starts July 14, 2025 at 2:00 PM, at Cuiabá Airport (MT)

Ends July 19, 2025 at 12:00 PM, at Cuiabá Airport (MT)

Post-Congress - POST-15

Starts July 28, 2025 at 2:00 PM, at Cuiabá Airport (MT)

End August 2, 2025 at 12:00 PM, at Cuiabá Airport (MT)

NUMBER OF PARTICIPANTS

Minimum: 08 | Maximum: 12

TYPE OF TRANSPORTATION

Van moving from the airport and in the region

Airports used

- Belo Horizonte – CNF
- Cuiabá – CGB

NEED

Participants must be at least 12 years old and accompanied by a parent or legal guardian.

WEBSITES

- [Complexo de cavernas Aroe Jari](#)
- [Flutuação em Nobre](#)



PHOTO BY CSABA EGRI



Aroe Jari Cave



General view of Chapada dos Guimarães

PHOTO BY JOSÉ A. LABEGALINI

CAVES AND GEODIVERSITY IN THE SOUTH OF CHAPADA DIAMANTINA (BA)

This route showcases the remarkable diversity of landscapes, climates, and culinary delights found in the southern region of Chapada Diamantina. Among the highlights are visits to various caves, including Lapa da Mangabeira, steeped in strong religious traditions and drawing pilgrims from across northeastern Brazil every August in the city of Ituaçu. In Ibicoara, numerous trekking trails wind through remnants of the Atlantic Forest, leading to breathtaking waterfalls such as Cachoeira do Buracão (85 meters high) and Cachoeirão (with a staggering 270-meter drop), as well as archaeological sites of historical significance. In Mucugê, moments of relaxation await with visits to the city's attractions, including the Byzantine Cemetery, Garimpo Museum, Semper Viva Museum, and trails leading to waterfalls and the towering Chapadões, followed by a visit to the UVVA winery, offering quality wines from the Bahian hinterland. Concluding the itinerary, a visit to Rio de Contas awaits, boasting one of the largest colonial architectural complexes in the state of Bahia, along with historic villages originating from quilombos (escaped slave settlements) and former mining sites.



Poço Encantado Cave

PREREQUISITES

Participants should be in good health and physically fit for light, medium and heavy walks, up to 8 km per day, along trails in open field areas or forest thickets, temperatures that can vary from 20°C to 40°C (68°F to 104°F) at this time of the year.

EQUIPMENT FOR INDIVIDUAL USE

It is recommended to wear footwear and overalls for caving, helmet with headlamp for activities inside caves. Participants should also bring hiking backpack, hiking boots, long pants, long-sleeved UV shirt and hat or cap, sunscreen and insect repellent.

INCLUDED IN THE PACKAGE

- Transport by van and/or car airport-visits-airport
- Tickets to attractions
- 6 overnight stays with breakfast
- Meals: lunch, trail snacks and dinner provided daily

NEED

Participants must be at least 16 years old and accompanied by a parent or legal guardian.

COORDINATOR

Elvis Barbosa

Email: barbosa.elvis@gmail.com

Phone/WhatsApp: +55 73 98127 0654

DATES

Pre-Congress - PRE-16

Starts July 13, 2025 at 12:00 PM, at Vitória da Conquista Airport (BA)

Ends July 19, 2025 at 8:00 AM, at the hotel in Vitória da Conquista (BA)

Post-Congress - POST-16

Starts July 28, 2025 at 12:00 PM, at Vitória da Conquista Airport (BA)

Ends August 3, 2025 at 8:00 AM, at the hotel in Vitória da Conquista (BA)

NUMBER OF PARTICIPANTS

Minimum: 12 | Maximum: 20

TYPE OF TRANSPORTATION

Van moving from the airport and in the region
Airports used

- Belo Horizonte – CNF
- Vitória da Conquista – VDC

WEBSITES

- [Ipatrimônio](#)
- [Secretaria de Turismo de Ituaçu](#)
- [Ibicoara](#)
- [Mucugê](#)
- [Janelas Abertas](#)
- [Vinícola UVVA](#)
- [Rio de Contas](#)
- [Itaetê/Nova Redenção](#)



Cave of Mangabeira

PHOTO BY JOSÉ AYRTON LABEGALINI

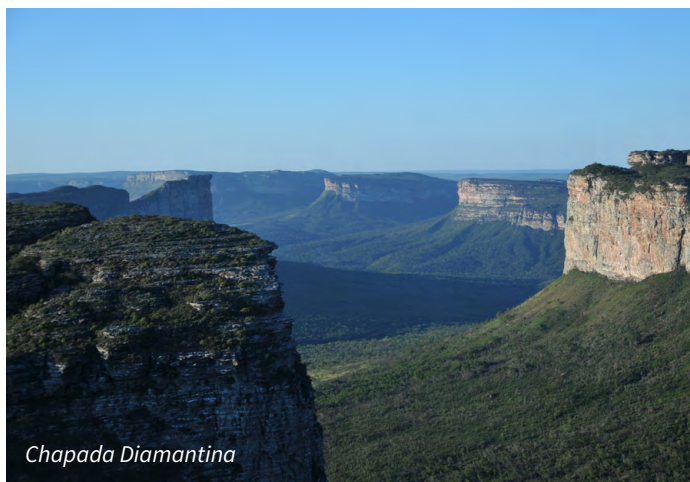
CAVES AND KARST OF THE CHAPADA DIAMANTINA (BA)

Chapada Diamantina, nestled in the heart of Bahia's central region, stands as a premier destination for nature tourism in Brazil. Today, it boasts a collection of geopark projects, underscoring its significance as a natural wonderland. Among its myriad attractions, caves hold a prominent position, showcasing a diverse range of lithologies and contexts. Within these caverns, one can uncover valuable archaeological remnants, including cave paintings, alongside intriguing traces of diamond mining dating back to the 19th century. This historical activity often transformed the sandstone rock formations, with many caves being hollowed out or expanded as a result. Ongoing research underscores the pivotal role of karst processes in shaping the region's landscape, particularly in sandstone and meta-sandstone mountains, giving rise to karst valleys, sinkholes, and other remarkable features. Yet, it is the monumental caves carved into carbonate rocks that truly captivate visitors, standing as the crown jewels of Chapada Diamantina and ranking among Brazil's largest and most awe-inspiring attractions.

PREREQUISITES

Participants should be in good health and physically fit for short and medium walks of up to 3 km per day, and a day of long and heavy walking (6 km and steep gradient), on trails on limestone outcrops, or in open sunny fields and inside caves, high temperatures in the sections outside the caves (up to 40°C or 86°F).

PHOTO BY JOSÉ AYRTON LABEGALINI



Chapada Diamantina

PHOTO BY ALLAN CALUX



Aerial view of Torrinha Cave entrance



COORDINATOR

Ricardo Galeno Fraga de Araújo Pereira

Email: fraga.pereira@ufba.br

Phone/WhatsApp: +55 71 98602 6567

Fernando Verassani Laureano

Email: verassani@gmail.com

Phone/WhatsApp: +55 31 98888 1410

DATES

Post-Congress - POST-17

Starts July 27, 2025 at 4:00 PM, at Lençóis Airport (BA)

End August 3, 2025 at 2:00 PM, at Lençóis Airport (BA)

NUMBER OF PARTICIPANTS

Minimum: 12 | Maximum: 20

TYPE OF TRANSPORTATION

20-seater van, in some places travel will be on foot

Airports used

- Belo Horizonte – CNF
- Lençóis – LEC

EQUIPMENT FOR INDIVIDUAL USE

It is recommended to wear hiking boots, long pants, a long-sleeved UV shirt, a hat or cap for hiking and a helmet with lighting for the caves. Participants should also bring a hiking backpack, long-sleeved shirt (protection against insects), sunscreen, insect repellent and cap.

INCLUDED IN THE PACKAGE

- Transport by van and/or car airport-visits-airport
- Tickets to attractions
- 7 overnight stays with breakfast
- Meals: lunch, trail snacks and dinner provided daily

NEED

Participants must be at least 16 years old and accompanied by a parent or legal guardian.

WEBSITES

- [Guia da Chapada Diamantina](#)
- [Parque Nacional da Chapada Diamantina](#)
- [Poço Azul](#)
- [Lapa Doce](#)
- [Sítios Geológicos e Paleobiológicos do Brasil](#)
- [Proposta do Geoparque Serra do Sincorá](#)
- [Poço Encantado](#)
- [Poço Encantado](#)
- [Caverna da Torrinha](#)
- [Gruta da Pratinha](#)



CAVE DIVING IN THE CHAPADA DIAMANTINA (BA)

ITINERARY CANCELED

Nestled within the heart of Chapada Diamantina, a wealth of subterranean wonders awaits exploration, drawing enthusiasts to its diverse array of attractions. A standout feature of this region is the opportunity for cave diving, with numerous caves and grottos scattered throughout the Chapada Diamantina National Park. Renowned for their richness and diversity of landscapes and ecosystems, these caves offer unparalleled opportunities for exploration beneath the surface. Situated in the central region of Bahia state, the Chapada Diamantina has emerged as a premier destination for cave diving in Brazil, boasting unique formations and distinctive characteristics. Notable dive sites include the Lapa Doce and the Pratinha-Gruta Azul Complex, each offering exceptional diving experiences characterized by their pristine waters and captivating underwater landscapes. This itinerary offers a balanced blend of diving excursions and cave visits, providing participants with the opportunity to immerse themselves in the natural splendor of the region. Prior to embarking on the journey, participants are required to specify their diving certifications and provide proof of their respective levels, ensuring a safe and enjoyable experience for all involved.

EQUIPMENT FOR INDIVIDUAL USE

It is recommended to wear hiking boots, long pants, a long-sleeved UV shirt, a hat or cap for hiking, and a helmet with a headlamp for cave exploration. Participants should also bring a hiking backpack, long-sleeved shirt (for insect protection), sunscreen, insect repellent, and a cap. Additionally, participants are advised to bring their own diving equipment, excluding cylinders and weights.

INCLUDED IN THE PACKAGE

- Transport by van and/or car airport-visits-airport
- Tickets to attractions
- Cylinders and weights for diving
- 4 overnight stays with breakfast
- Meals: lunch, trail snacks and dinner provided daily

NEED

Participants must be at least 18 years old and hold a Full Cave certification or its equivalent to engage in speleodiving.

WEBSITES

- [Guia da Chapada Diamantina](#)
- [Parque Nacional da Chapada Diamantina](#)
- [Gruta da Pratinha](#)
- [Lapa Doce](#)
- [Lapa Doce](#)
- [Morro do Pai Ignácio](#)
- [Lila Restaurante e Orquidário](#)

COORDINATOR

Joffer Fernandes

Email: espeleomergulho@gmail.com

Phone/WhatsApp: +55 11 917061980

Fernando Verassani Laureano

Email: verassani@gmail.com

Phone/WhatsApp: +55 31 98888 1410

DATES

Pre-Congress - PRE-18

Starts July 15, 2025 at Lençóis Airport (BA)

Ends July 19, 2025 in Belo Horizonte (MG)

Post-Congress - POST-18

Starts July 28, 2025 in Belo Horizonte (MG)

Ends August 1, 2025 in Lençóis (BA)

NUMBER OF PARTICIPANTS

Minimum: 2 | Maximum: 4

TYPE OF TRANSPORTATION

Air between Belo Horizonte – Lençóis – Belo Horizonte

Van when traveling from the airport, to parks and the region

Airports used

- Belo Horizonte – CNF
- Lençóis – LEC



Cave of Pratinha

THE LONGEST CAVES OF CENTRAL-NORTH OF BAHIA (BA)

In the heart of the caatinga in central-north Bahia lies a treasure trove of subterranean wonders, where the rugged terrain gives way to expansive caverns carved into the Salitre Formation of the Una Group. Among these, the Toca da Boas Vista and Toca da Barriguda stand as titans, ranking among the largest caves in Brazil. Stretching an impressive 114 kilometers and 35 kilometers respectively, these labyrinthine marvels offer an immersive journey into the depths of the earth. Further south, the Gruta dos Brejões beckons with its grand entrance portico, soaring skyward in a majestic parabolic arch reaching heights of one hundred meters. Within, vast galleries mirror the grandeur of the cavern's exterior, while skylights cast ethereal illumination upon its inner sanctum. Complementing this odyssey, the route ventures to Toca dos Ossos, an esteemed Miocene paleontological site, and explores the storied depths of Gruta dos Convento and the Caves of Sumidouro. As the journey unfolds, participants embark on a scenic boat excursion across the expansive waters of the Sobradinho Hydroelectric Plant, meandering through one of the largest artificial lakes in the world. Finally, the itinerary concludes with moments of respite amidst the region's vineyards, indulging in the crisp effervescence of locally crafted sparkling wines.



PHOTO BY RODRIGO LOPES FERREIRA

Cave of Brejões

PREREQUISITES

Participants should be in good health and physically fit for long walks, up to 10 km per day, on rugged trails with many descents and ascents, with loose blocks and stones, high temperatures in the sections outside the caves (30°C or 86°F) and in the winter season. very dry year.

EQUIPMENT FOR INDIVIDUAL USE

Participants must have caving shoes and overalls, helmet with headlamp and water canteen. Additionally, it is recommended to bring hiking backpack, long-sleeved shirt (protection against insects), sunscreen, insect repellent and cap.

INCLUDED IN THE PACKAGE

- Transport by van and/or car airport-visits-airport
- Tickets to attractions
- 7 overnight stays with breakfast
- Meals: lunch, trail snacks and dinner provided daily

COORDINATOR

Rodrigo Lopes Ferreira

Email: drops@ufla.br

Phone/WhatsApp: +55 61 99111 8690



DATES

Post-Congress - POST-19

Starts July 28, 2025 at 7:00 PM, at Petrolina Airport (PE)

Ends August 4, 2025 at 6:00 PM, at the hotel in Petrolina (PE)

NUMBER OF PARTICIPANTS

Minimum: 08 | Maximum: 16

TYPE OF TRANSPORTATION

Van when traveling from the airport, to parks and the region
Airports used

- Belo Horizonte – CNF
- Petrolina – PNZ

NEED

Participants must be at least 16 years old and accompanied by a parent or legal guardian.

WEBSITES

- [Cavernas, Carste e Patrimônio Espeleológico na Chapada Diamantina, Bahia, Brasil](#)
- [Toca da Boa Vista](#)
- [Toca da Boa Vista](#)
- [Gruta dos Brejões](#)
- [Gruta dos Brejões](#)
- [Hidrelétrica de Sobradinho](#)
- [Petrolina](#)
- [Vinícolas](#)



PHOTO BY RODRIGO LOPES FERREIRA

Aerial view of the karst in the Brejões region

SERRA DA CAPIVARA NATIONAL PARK (PI)

The Serra da Capivara National Park stands as the epicenter of prehistoric exploration on the American continent, distinguished as a UNESCO World Heritage Site. This designation underscores its significance as a custodian of the oldest known examples of rock art across the continent, serving as an archaeological sanctuary wherein an extensive array of remnants has been meticulously preserved over millennia. Here, the intertwining of cultural heritage and indigenous ecosystems manifests in a profound symbiosis. Functioning as a monumental open-air museum, the park showcases a breathtaking panorama of rock formations alongside pivotal archaeological and paleontological sites. These sites bear witness to the coexistence of ancient human civilizations and prehistoric fauna, offering invaluable insights into the rich tapestry of the region's past. Through its preservation efforts, the Serra da Capivara National Park emerges as a custodian of cultural legacy and a testament to the enduring interplay between humanity and its natural surroundings.

PREREQUISITES

Participants should be in good health and physically conditioned for light walks, up to 8 km per day, along trails in open field areas or forest thickets, temperatures that can vary from 20°C to 40°C (68°F to 104°F) at this time of year.

EQUIPMENT FOR INDIVIDUAL USE

It is recommended to wear sneakers or hiking boots, long pants, a long-sleeved UV shirt and a hat or cap, sunscreen and insect repellent.

INCLUDED IN THE PACKAGE

- Transport by van and/or car airport-visits-airport
- Tickets to attractions
- 7 overnight stays with breakfast
- Meals: lunch, trail snacks and dinner provided daily

NEED

Participants must be at least 12 years old and accompanied by a parent or legal guardian.

COORDINATOR

Paulo Simões

Email: prsimoes@gmail.com

Phone/WhatsApp: +55 31 98551 8518

DATES

Pre-Congress - PRE-20

Starts July 12, 2025 at 7:00 PM, at Petrolina Airport (PE)

Ends July 19, 2025 at 8:00 AM, at the hotel in Petrolina (PE)

Post-Congress - POST-20

Starts July 28, 2025 at 7:00 PM, at Petrolina Airport (PE)

End August 4, 2025 at 8:00 AM, at the hotel in Petrolina (PE)

NUMBER OF PARTICIPANTS

Minimum: 08 | Maximum: 12

TYPE OF TRANSPORTATION

Minibus or van traveling from the airport, in PARNA and the region

Airports used

- Belo Horizonte – CNF
- Petrolina – PNZ

WEBSITES

- [PARNA Serra da Capivara](#)
- [FUMDHAM](#)
- [Museu da Natureza](#)
- [Museu do Homem Americano](#)



PHOTO BY ARTUR WARCHA/CHIK

Pedra Furada Archeological Site



PHOTO BY JOSÉ A. RTON LABEGALINI

Painting symbol of the park

CHAPADA DE IBIAPABA, SETE CIDADES, AND THE BEACHES OF JERICOACOARA (CE and PI)

The itinerary offers a comprehensive exploration of speleogenesis in both carbonate and siliciclastic rocks across the states of Ceará and Piauí, encompassing semi-arid regions, humid enclaves, and coastal areas. Commencing with a visit to Casa de Pedra Cave situated within a karst inselberg in the hinterland of Itaitira/Madalena, participants will encounter a rare example of paleokarst exhumed at the base of an ancient mountain range resulting from the Brazilian/Pan-African orogenesis. Continuing towards the eastern edge of the Serra de Ibiapaba, an oasis amidst the caatinga, participants will be greeted by a mild climate fostered by dense tropical forests, with an average altitude of 850m and abundant rainfall. This region is home to the Ubajara National Park, boasting a plethora of attractions including trails, viewpoints, caves, waterfalls, and cable cars. Notably, it harbors Ceará's most significant speleological heritage, featuring several registered caves and one of Brazil's most stunning lapiás formations. Highlighting the park's offerings is the Ubajara Cave, renowned as the region's largest and most embellished cave, serving as a primary tourist draw. Beyond the 450 meters open to visitors, participants will explore various sections of the cave, unveiling records of its diverse endokarst evolution phases, including the active phreatic zone's pinnacle. Transitioning to the Sete Cidades National Park, an area of geo-speleological and archaeological significance, participants will encounter a natural geological marvel sculpted from Devonian sandstones of the Cabeças Formation. Characterized by tabular plateaus eroded into tables, hills, and towers, alongside steep valleys and circular depressions indicative of "pseudokarst," the park boasts a wealth of cave paintings reminiscent of those found in the Serra da Capivara. Explorations within the park will encompass visits to small caves and shelters nestled within the sandstones, as well as archaeological sites adorned with primitive cave paintings, offering insights into the region's ancient inhabitants. Concluding the journey at the Jericoacoara National Park on Ceará's western coast, participants will be greeted by a landscape renowned for its dunes, mangroves, lagoons, and idyllic beaches. Amidst these scenic wonders lie small caves, marine pillars, and the Pedra Furada Arch, formed through wave abrasion on quartzites of the São Joaquim Formation. Unveiling the park's geomorphological evolution dating back to the penultimate Pleistocene marine transgression, participants will delve into the region's rich natural history, concluding their expedition with a deeper appreciation for the diverse geological and archaeological wonders of the region.

PREREQUISITES

Participants should be in good health and physically capable of short and medium walks, up to 4 km per day, on flat and steep trails over sandstone and limestone outcrops, where high temperatures can reach up to 40°C or 86°F. Skill in climbing (ascending and descending) on a rope, in the interior sections of the caves.

EQUIPMENT FOR INDIVIDUAL USE

As the proposal involves visiting caves and non-tourist karst landscapes, it is recommended, but not mandatory, that the participant brings complete caving equipment (overalls, boots, helmet, headlamp, flashlight and gloves, in addition to a complete rappelling kit if you intend to participate in the itinerary in the Ubajara Cave). Only on one of the days will the use of all equipment be necessary. Types I and II mountain helmets can be borrowed if the participant is unable to take one.

COORDINATOR

Cesar Ulisses V. Veríssimo

Email: verissimo@ufc.br

Phone/WhatsApp: +55 85 8888 0071

DATES

Pre-Congress - PRE-21

Starts July 11, 2025 at 12:00 PM, at Fortaleza Airport (CE)

Ends July 19, 2025 at 7:00 AM, at the hotel in Fortaleza (CE)

Post-Congress - POST-21

Starts July 28, 2025 at 12:00 PM, at Fortaleza Airport (CE)

End August 5, 2025 at 7:00 AM, at the hotel in Fortaleza (CE)

NUMBER OF PARTICIPANTS

Minimum: 15 | Maximum: 24

TYPE OF TRANSPORTATION

Minibus or van traveling from the airport, in PARNAs and the region

Airports used

- Belo Horizonte – CNF
- Fortaleza – FOR

INCLUDED IN THE PACKAGE

- Transport by minibus or van airport-visits-airport
- Tickets to attractions
- 8 overnight stays with breakfast
- Meal: lunch, trail snacks and dinner provided daily

NEED

Participants must be at least 12 years old and accompanied by a parent or legal guardian.

WEBSITES

- [PARNA Sete Cidades](#)
- [Wikiparques](#)
- [ICMBio](#)
- [SETUR](#)
- [Arco da Pedra Furada](#)

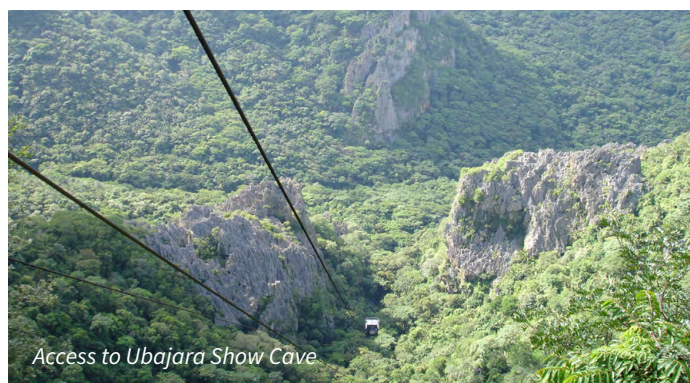


PHOTO BY JOCY BRANDÃO

THE AMAZON FOREST AND THE CAVES IN FERRUGINOUS ROCKS IN CARAJÁS (PA)

The Carajás National Forest encompasses a multitude of interests, including environmental preservation, botanical research, and mineral extraction. Situated within the expansive Amazon rainforest, it boasts rugged terrain and stands as a global hub for iron ore extraction. Within the iron lithologies of Carajás, caves harbor a notable richness of specialized species with restricted distribution, known as troglobites. These caves also showcase unique biospeleogenesis, characterized by distinct minerals and speleothems, contributing significantly to the region's extraordinary biodiversity and geological importance.

PREREQUISITES

Participants should be in good health and physically fit for short and medium hikes, up to 2 km per day, on open trails in the forest and inside caves, high temperatures in the sections outside the caves (38°C or 100.4°F).

EQUIPMENT FOR INDIVIDUAL USE

Given the nature of the itinerary, which includes visits to caves and non-touristic iron landscapes, participants are advised to bring complete caving equipment, including overalls, boots, helmet, headlamp, flashlight, and gloves. The use of leggings is mandatory, and they will be provided onsite. Additionally, it is recommended to bring a hiking backpack, long-sleeved shirt (for protection against insects), sunscreen, insect repellent, and a cap.

INCLUDED IN THE PACKAGE

- Transport by van and/or car airport-visits-airport
- Tickets to attractions
- 4 overnight in hotel with breakfast and dinner
- Meal: trail snack

NEED

Participants must be at least 18 years old.

COORDINATOR

Tatiane Monteiro

Email: tatianems19@hotmail.com

Phone/WhatsApp: +55 94 98135 7809

DATES

Pre-Congress - PRE-22

Starts July 14, 2025 at 1:00 PM, at Carajás Airport (PA)

Ends July 18, 2025 at 4:00 PM, at Carajás Airport (PA)

Post-Congress - POST-22

Starts July 28, 2025 at 1:00 PM, at Carajás Airport (PA)

End August 1, 2025 at 4:00 PM, at Carajás Airport (PA)

NUMBER OF PARTICIPANTS

Minimum: 08 | Maximum: 13

TYPE OF TRANSPORTATION

Van moving from the airport, in PARNA and the region

Airports used

- Belo Horizonte – CNF
- Carajás – CKS

WEBSITES

- [FLONA de Carajás](#)
- [BioParque Vale Amazônia](#)
- [PARNA Campos Ferruginosos](#)



PHOTO BY ATALIBA COELHO

SANDSTONE CAVES, IGAPÓS, AND IGARAPÉS OF THE AMAZON (AM)

Immerse yourself in the heart of the Amazon rainforest with a visit to Manaus, the capital of the state of Amazonas. Nestled along the banks of the Rio Negro, this unique city offers an unparalleled experience surrounded by waterways. Witness the majestic convergence of the Rio Negro and Rio Solimões, forming the mighty Amazon River. Manaus invites you to explore its rich tapestry of history, culture, and natural wonders. Spend time delving into the city's vibrant atmosphere while also venturing into the lush jungle that surrounds it. Experience the best of both worlds as you divide your time between urban exploration and jungle adventures, all within a single trip. Indulge in a variety of activities, from historical and cultural tours to culinary delights that tantalize the taste buds. Embark on a journey along the rivers, soaking in the lush greenery of the rainforest and savoring the aromas of tropical fruits. Discover the ecological marvels of this paradise, where every turn reveals breathtaking natural beauty. Just 130 kilometers from Manaus lies Presidente Figueiredo, offering a captivating excursion into the heart of the Amazon Rainforest. Take a leisurely 2.3 kilometer stroll through the dense foliage to reach the refreshing waters of Caverna Refugio de Maruaga's resurgence or the mesmerizing waterfall cascading in front of Gruta da Judéia. Please note that while this itinerary is facilitated by Amazon Express Viagens e Turismo, not all experiences are exclusive to the 19th ICS Group.

PREREQUISITES

Participants should be in good health and physically capable for short and medium hikes, up to 3 km per day, on open trails in the forest, high temperatures in the sections outside the caves (up to 30°C or 86°F).



Catedral Cave

PHOTO BY RICARDO MARTINELLI



Cave of Judeia

PHOTO BY RICARDO MARTINELLI



COORDINATOR

Euricy Barros or Nathasha Monteiro

Amazon Express Travel and Tourism

Email: reservas@amazonexplorers.com.br

Phone/WhatsApp (Euricy): +55 92 99126-1700

Phone/WhatsApp (Nathasha): +55 92 99135-0684

DATES

Pre-Congress - PRE-23

Starts July 15, 2025 at 8:00 AM, at the Ibis Styles Manaus Hotel (AM)

Ends July 19, 2025 at 9:00 AM, at the Ibis Styles Manaus Hotel (AM)

Post-Congress - POST-23

Starts July 28, 2025 at 8:00 AM, at the Ibis Styles Manaus Hotel (AM)

End August 01, 2025 at 2:00 PM, at the Ibis Styles Manaus Hotel (AM)

NUMBER OF PARTICIPANTS

Minimum: 08 | Maximum: 12

TYPE OF TRANSPORTATION

Van moving from the airport and transfers and boats on the waterways.

Airports used

- Belo Horizonte – CNF
- Manaus – MAO

EQUIPMENT FOR INDIVIDUAL USE

Participants should come prepared with hiking boots and helmet with headlamp for the day visiting the caves. Additionally, it is recommended to use hiking backpack, bathing suit, long-sleeved shirt (protection against insects), sunscreen, insect repellent and hat or cap, for hiking on forest trails.

INCLUDED IN THE PACKAGE

- Transport by hotel-airport van before the congress
- Tickets to attractions
- Transport by airport-hotel van after the congress
- Boat transport on riverways
- 4 overnight stays with breakfast
- Meal: lunch, trail snacks and dinner provided daily

NEED

Participants must be at least 12 years old and accompanied by a parent or legal guardian.

WEBSITES

- [Turismo em Manaus](#)
- [Cataratas de Presidente Figueiredo](#)
- [Grutas de Presidente Figueiredo](#)
- [Encontro das águas](#)

FROM A SEA TO THE SEMI-DESERT OF THE SERTÃO (RN)

Rio Grande do Norte (RN) stands as the fourth Brazilian state in terms of cave abundance, boasting over 1,400 recorded sites. Predominantly nestled within the limestones of the Jandaíra Formation, these caves trace their origins to the transgressive marine regime of the Upper Cretaceous period. Concentrated largely in the western region of RN, notably in municipalities such as Baraúna, Felipe Guerra, Governador Dix-Sept Rosado, and Martins, approximately 90% of these caverns find their home. Beyond sheer quantity, the region emerges as a vital player in the Brazilian biospeleological landscape, showcasing a remarkable diversity of troglobite species intricately linked with subterranean aquifers. This ecological richness unfolds against a backdrop of profound paleoclimatic shifts, including historical oceanic transgressions and regressions, marking the region as unique within the South American context. Notably, it hosts the sole oceanic relict species currently documented in Brazil. The forthcoming event heralds the inauguration of the CaveRNas integrated regional tourism itinerary, encompassing a selection of prominent caves across the landscape. Featured sites include three caves within the Furna Feia National Park (Furna Feia, Furna Nova, and Abrigo do Letreiro), alongside three others situated in Felipe Guerra/RN (Cavernas dos Crotes, Catedral, and da Carrapateira), as well as the Casa de Pedra cave within the Cavernas de Martins State Natural Monument. Each of these caves will be duly licensed for tourist exploration, accompanied by approved Speleological Management Plans. Complementing these subterranean excursions, the itinerary will encompass visits to traditional tourist attractions, including beaches, dunes, salt flats, and archaeological sites. Moreover, cultural immersion opportunities abound, showcasing local handicrafts, typical cuisine, and regional customs, thereby providing visitors with a comprehensive glimpse into the area's cultural tapestry. Rounding out the experience, participants will have the chance to explore additional caves and karst landscapes not included in formal itineraries, unveiling hidden gems such as waterfalls, springs, and resurgences, all seamlessly interwoven with the natural essence of the Caatinga biome, a hallmark of Brazil's exclusive ecological heritage.

PREREQUISITES

Participants should be in good health and physically capable of undertaking short and medium hikes, up to 5 km per day, on trails over limestone outcrops and inside caves, high temperatures in sections outside the caves (up to 40°C or 86°F).

EQUIPMENT FOR INDIVIDUAL USE

As the proposal involves visiting caves and non-tourist karst landscapes, it is recommended that participants bring complete caving equipment (overalls, boots, helmet, flashlight and gloves, as well as a complete rappelling kit if they intend to participate in the Trapiá cave itinerary). However, only on a few days will the use of all equipment be necessary.

INCLUDED IN THE PACKAGE

- Transport by van and/or car airport-visits-airport
- Tickets to attractions
- 8 overnight stays with breakfast
- Meal: lunch, trail snacks and dinner provided daily

COORDINATOR

Diego de Medeiros Bento

Email: diegobento.cecav@gmail.com

or diego.bento@icmbio.gov.br

Phone/WhatsApp: +55 84 99633-3837

DATES

Post-Congress - POST-24

Start: July 28, 2025 at 3:00 PM, at Mossoró Airport (RN)

End: August 5, 2025 at 3:00 PM, at the hotel in Mossoró (RN)

NUMBER OF PARTICIPANTS

Minimum: 08 | Maximum: 16

TYPE OF TRANSPORTATION

Van or bus traveling from the airport.

4x4 trucks or minibus/van, for travel in the route region.

Airports used

- Belo Horizonte – CNF
- Mossoró – MVF



Cave of Catedral

PHOTO BY DIEGO BENTO

NEED

Participants must be at least 12 years old and accompanied by a parent or legal guardian.

WEBSITES

- [Hotel Thermas \(Mossoró/RN\)](#)
- [Hotel Villa Oeste \(Mossoró/RN\)](#)
- [Hotel Chalé Lagoa dos Ingás \(Martins/RN\)](#)
- [Prefeitura de Mossoró/Corredor Cultural](#)
- [Cervejaria Bacurim](#)
- [Rota do Sal](#)
- [Lajedo de Soledade](#)
- [Serra de Martins/RN](#)

GEOSPELEOLOGY OF THE SÃO DESIDÉRIO KARST (BA)

The São Desidério karst, characterized by gigantic caves, rare speleothems, and vast underground lakes and halls, boasts a geological history dating back over 20 million years. Situated amidst the Brazilian savanna, this landscape features stunning sinkholes with towering limestone walls reaching heights of 70-90 meters, offering a striking contrast to the surrounding semi-desert environment. Our accommodation in the city of São Desidério will be a comfortable eco-lodge, complete with a swimming pool and expansive open garden areas. Over the course of our visit, we will explore three cave systems: *João Rodrigues*, *Manoel Lopes*, and *Cânion da Beleza*. Two days will be dedicated to more extensive cave passages, involving full-day explorations that include swimming sections with buoy assistance, vertical descents into sinkholes using specialized techniques, traversing large halls strewn with fallen blocks, and navigating through narrow passages over mud, sand, or blocks. Intermittent days of lighter physical activity will provide opportunities to visit geological and archaeological sites, admire the stunning karst landscapes, and enjoy recreational activities on local rivers, allowing for rest and preparation for upcoming cave explorations. Throughout the journey, we will delve into the history of speleological explorations in the region, gain insights into the culture and knowledge of local residents, and unravel the geological evolution of the caves and surrounding terrain.

PREREQUISITES

Participants should be in good health and physically capable for outdoor walks, lasting a maximum of 1 hour outside the caves, along trails in the middle of the forest, with an easy to medium level of difficulty, in temperatures of 30-40°C (86-104°F) and seasonally dry climate. Provision for crossings inside caves lasting between 4-8h, with air and water temperatures between 25-27°C (77-81°F).

EQUIPMENT FOR INDIVIDUAL USE

Participants should come prepared with closed footwear for the trail/cave, helmet with electric lighting (headlamp), backup lighting and backup batteries (autonomy of up to 10 hours inside the cave), complete equipment for vertical caving and knowledge of basic rope access techniques (single rope techniques), long pants or light caving overalls, leggings (provided by the organization) and caving backpack. Additionally, it is recommended to bring hat/cap, sunscreen and insect repellent.

COORDINATOR

Lucas Padoan de Sá Godinho

Email: lucaspagodinho@gmail.com

Phone/WhatsApp: +55 11 94110 4546

DATES

Pre-Congress - PRE-25

Starts July 13, 2025 at 9:00 AM, at Brasília Airport (DF)

Ends July 19, 2025 at 4:00 PM, at Brasília Airport (DF)

NUMBER OF PARTICIPANTS

Minimum: 10 | Maximum: 16

TYPE OF TRANSPORTATION

Van and/or passenger cars traveling from Brasília airport and in the São Desidério region. Airports used:

- Belo Horizonte – CNF
- Brasília – BSB

INCLUDED IN THE PACKAGE

- Transport by van and/or car on the airport-visits-airport transfer.
- Tickets to attractions
- 6 overnight with breakfast included.
- Meal: lunch, trail snacks and dinner provided daily.
- Leggings.
- For those interested, vertical caving kits can be rented, with advance notice.

NEED

Participants must be at least 16 years old and accompanied by a parent or legal guardian.

WEBSITES

- [Monumento Natural Cavernas de São Desidério](#)
- [Parque Municipal da Lagoa Azul](#)
- [São Desidério turismo](#)
- [Relatos de expedição – Blog Terrasub](#)



PHOTO BY LUCAS PADOAN

Garganta do Bacupari Cave



PHOTO BY ALEXANDRE LOBO

Buraco do Inferno da Lagoa do Cemitério Cave

Ouro Grosso Cave in Iporanga-SP.

PHOTO BY RICARDO MARTINELLI



PARTNERS

Click on the image to access their websites



MINISTÉRIO DO
MEIO AMBIENTE E
MUDANÇA DO CLIMA



CULTURA E
TURISMO



MINAS
GERAIS

GOVERNO
DIFERENTE.
ESTADO
EFICIENTE.

SECRETARIA DE
MEIO AMBIENTE E
DESENVOLVIMENTO
SUSTENTÁVEL



MINAS
GERAIS
GOVERNO DE TODOS

Belotur
BH, SÓ PENSO EM VOCÊ.



AA
FUNDAÇÃO CULTURAL
"PASCOAL ANDRETA"



CARSTOGRAFICA
Karst Applied Research Centre

